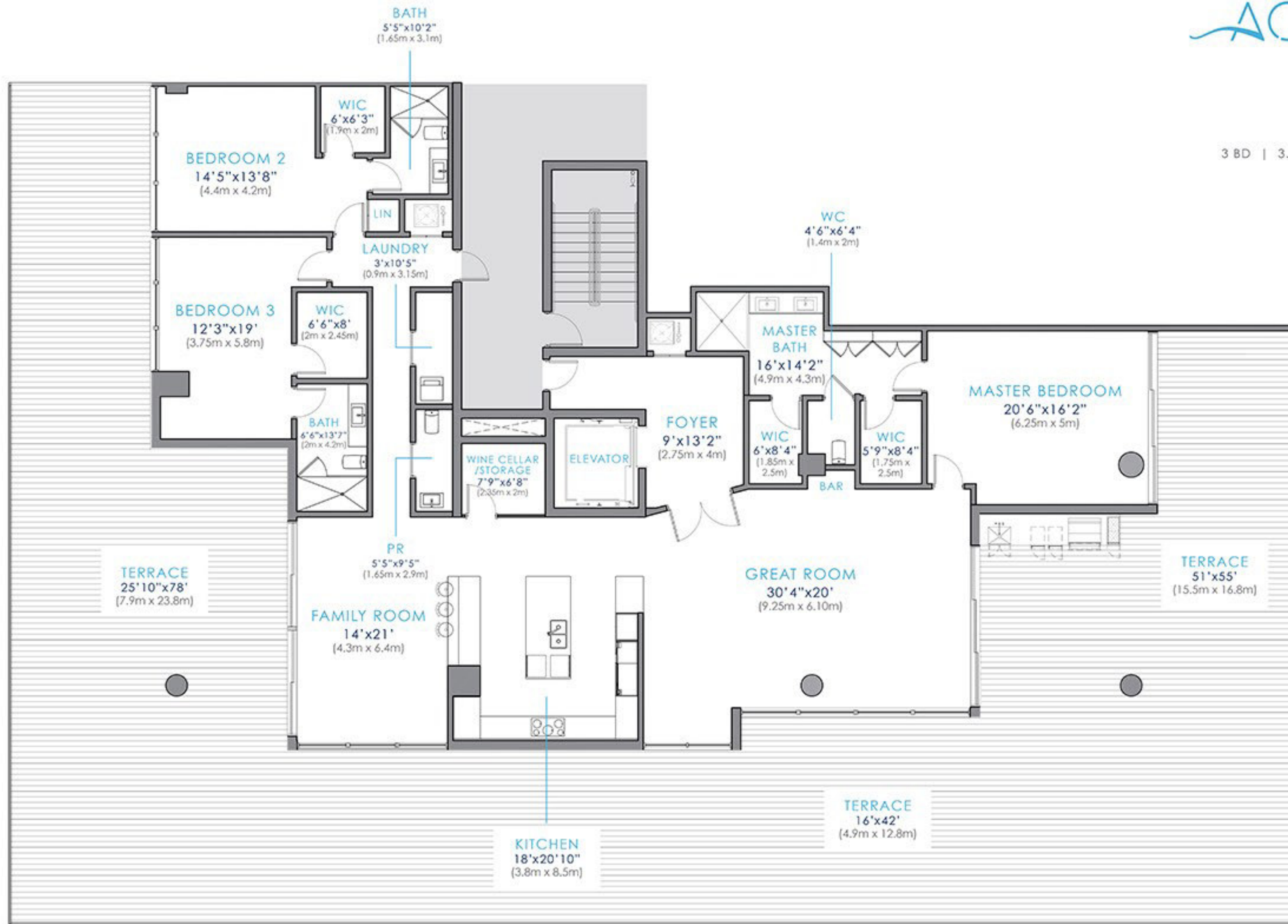


AZURE
FLOOR 5

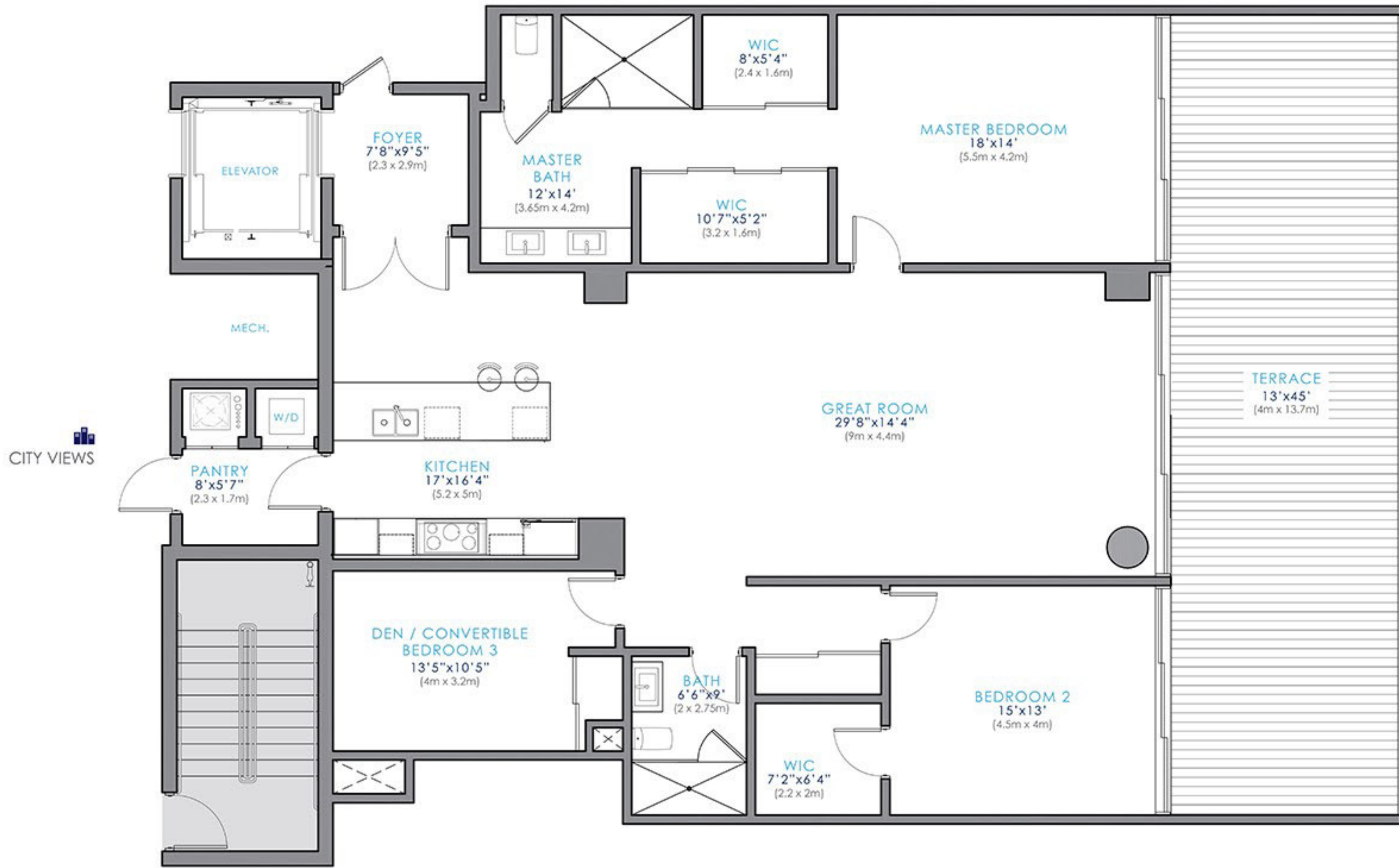
3 BD | 3.5 BA | 7,251 SF (673.6 m²)

CITY VIEWS

INTRACOASTAL
& OCEAN VIEWS

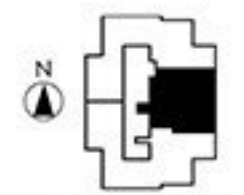


INDIGO
FLOOR 5
2 BD + Den | 2 BA
2,712.7 sf (251.9 m²)

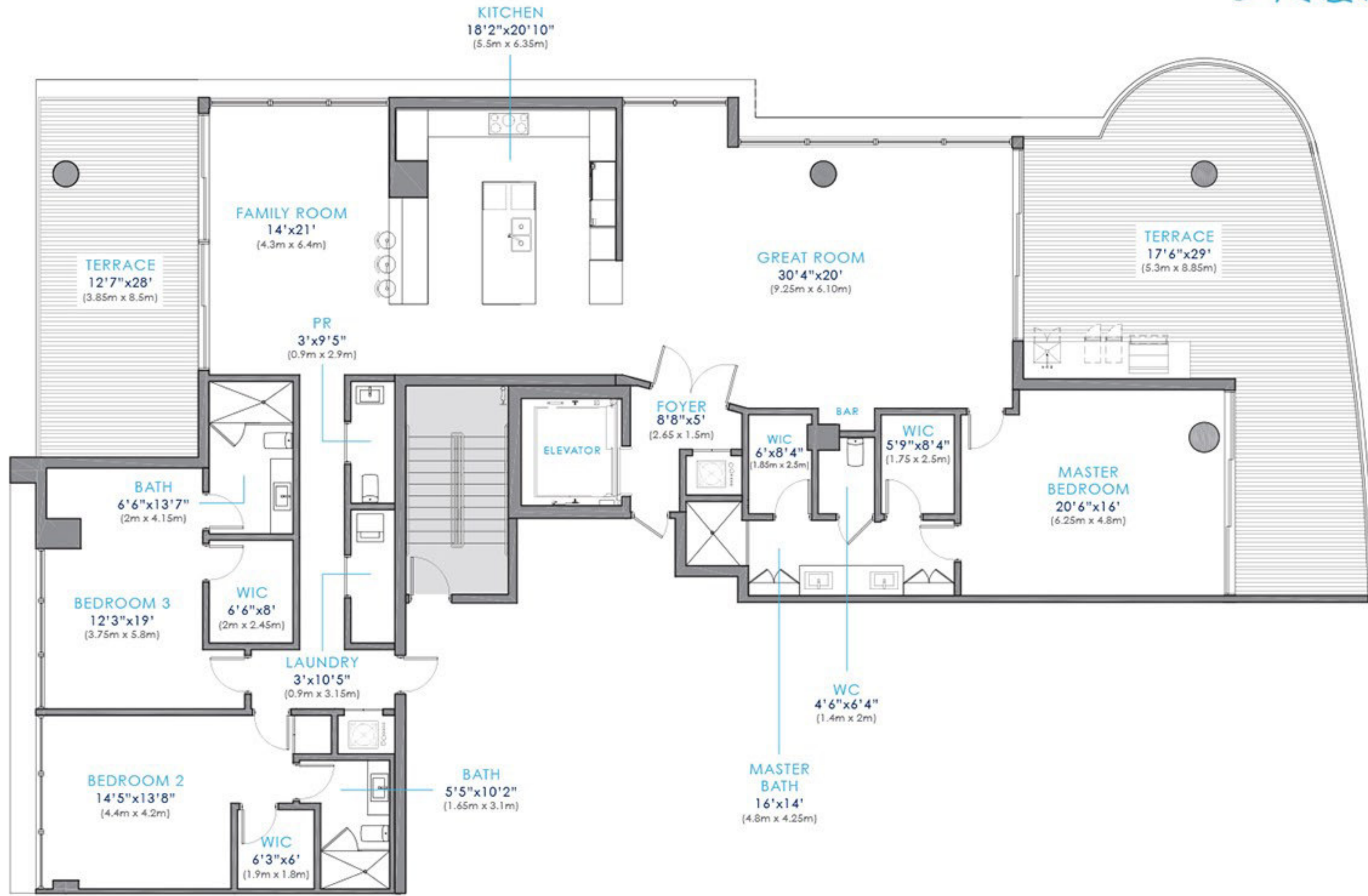


CITY VIEWS

INTRACOASTAL
& OCEAN VIEWS



SAPPHIRE
FLOORS 6-16
3 BD | 3.5 BA
4,184.4 sf (388.7 m²)



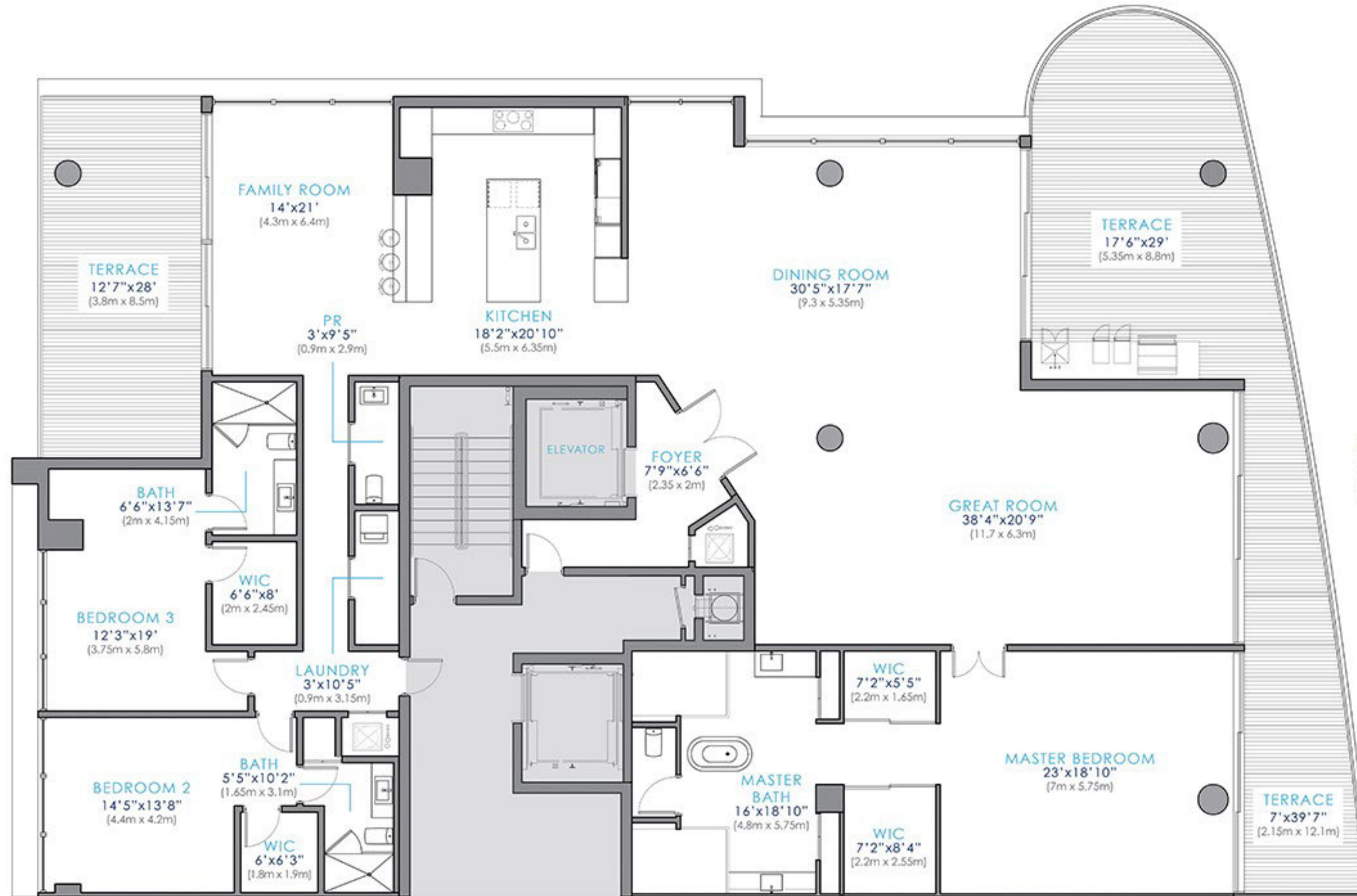
CITY VIEWS

INTRACOASTAL & OCEAN VIEWS



ROYAL
NORTH PENTHOUSE
3 BD | 3.5 BA
5,345 sf (497.5 m²)

CITY VIEWS

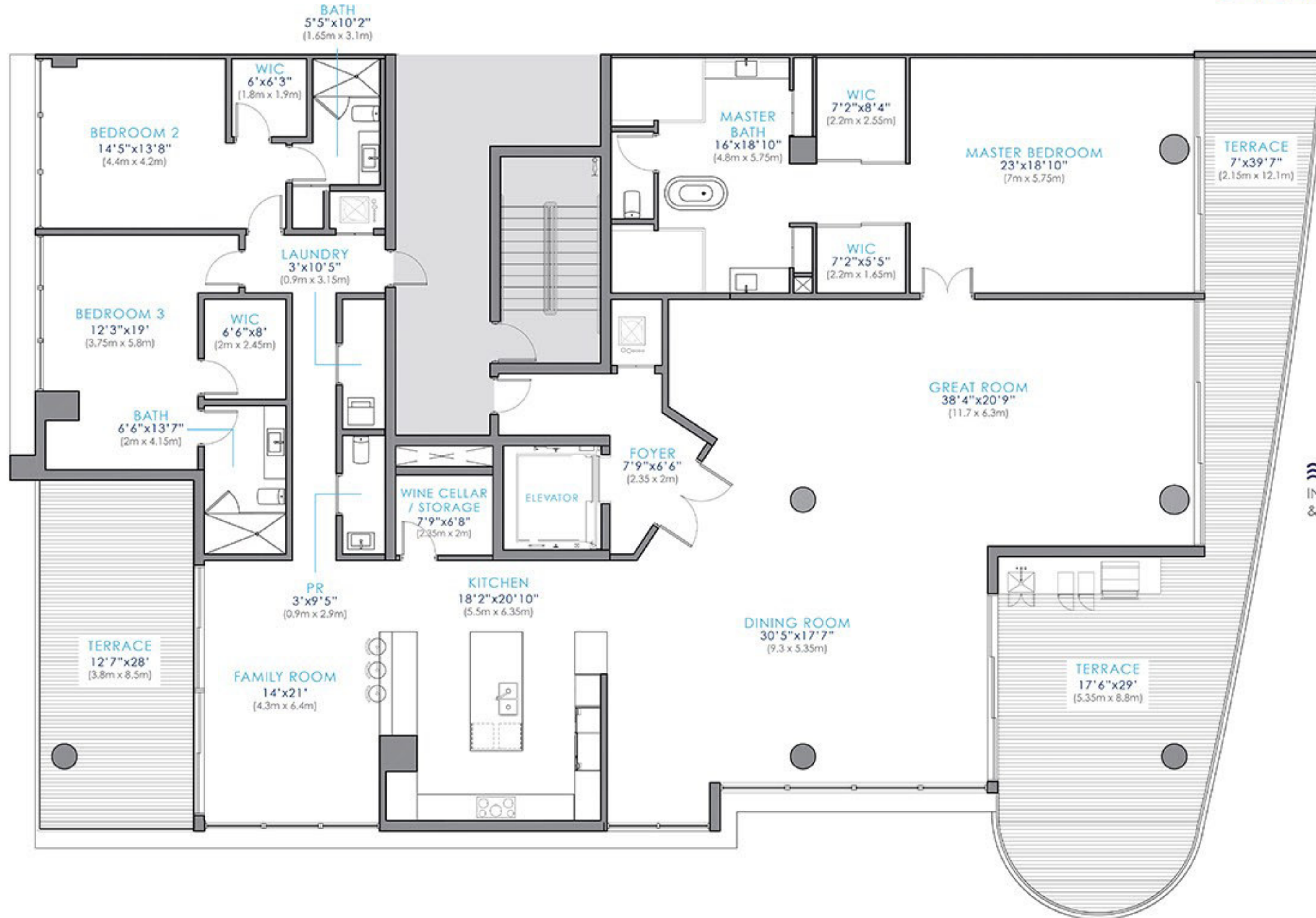


INTRACOASTAL
& OCEAN VIEWS



OXFORD
SOUTH PENTHOUSE
3 BD | 3.5 BA
5,345 sf (497.5 m²)

CITY VIEWS



INTRACOASTAL
& OCEAN VIEWS

