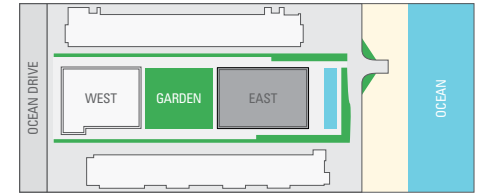


321 OCEAN ENRIQUE NORTEN SOUTH BEACH

Miami Residence Realty • 305-751-1000 • www.MiamiResidence.com

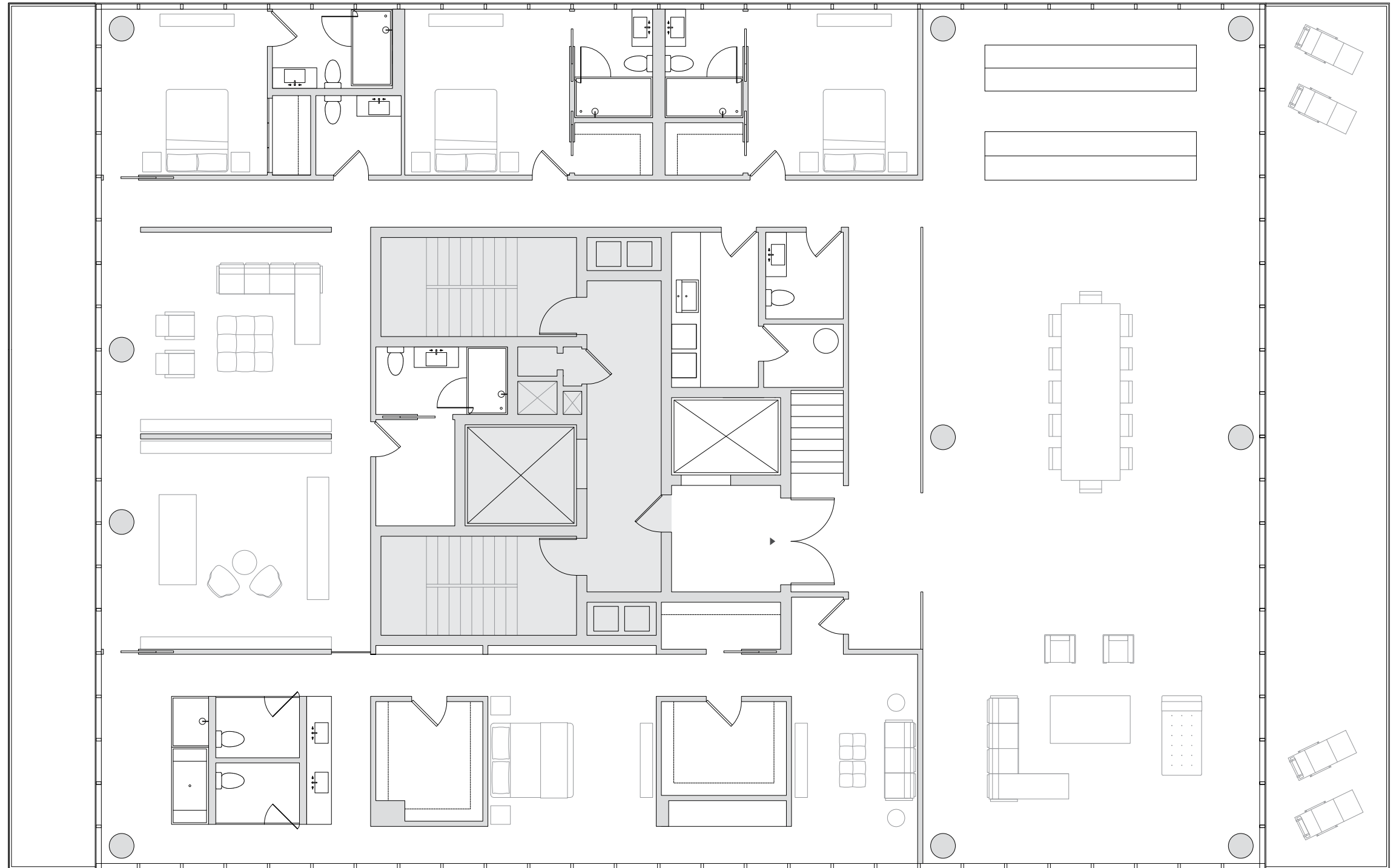


OCEANFRONT PENTHOUSE

4 Bedrooms, Den & Media Room
5 Full Bathrooms & 2 Powder Rooms
2 Balconies & Private Pool

6,807 sf // 632 m² Residence
1,190 sf // 111 m² Balconies
5,223 sf // 485 m² Roof Deck

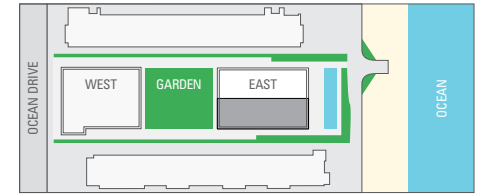
13220 sf // 1,228 m² Total



STATED DIMENSIONS ARE MEASURED TO EXTERIOR BOUNDARIES OF THE EXTERIOR WALLS AND THE CENTERLINE OF INTERIOR DEMISING WALLS AND IN FACT VARY FROM THE DIMENSIONS THAT WOULD BE DETERMINED BY USING THE DESCRIPTION AND DEFINITION OF THE "UNIT" SET FORTH IN THE DECLARATION (WHICH GENERALLY ONLY INCLUDES THE INTERIOR AIRSPACE BETWEEN THE PERIMETER WALLS AND EXCLUDES INTERIOR STRUCTURAL COMPONENTS). FOR YOUR REFERENCE, THE AREA OF THE UNIT, WHICH IS A CONCEPTUAL REPRESENTATION OF THE COMBINATION OF UNITS 900 AND 901, DETERMINED IN ACCORDANCE WITH THOSE DEFINED UNIT BOUNDARIES, IS 6,226 SQ FT. NOTE THAT MEASUREMENTS OF ROOMS SET FORTH ON THIS FLOOR PLAN ARE GENERALLY TAKEN AT THE GREATEST POINTS OF EACH GIVEN ROOM (AS IF THE ROOM WERE A PERFECT RECTANGLE), WITHOUT REGARD FOR ANY CUTOUTS. ACCORDINGLY, THE AREA OF THE ACTUAL ROOM WILL TYPICALLY BE SMALLER THAN THE PRODUCT OBTAINED BY MULTIPLYING THE STATED LENGTH TIMES WIDTH. ALL DIMENSIONS ARE APPROXIMATE AND MAY VARY WITH ACTUAL CONSTRUCTION, AND ALL THE FLOOR PLANS AND DEVELOPMENT PLANS ARE SUBJECT TO CHANGE.

321 OCEAN ENRIQUE NORTEN SOUTH BEACH

Miami Residence Realty • 305-751-1000 • www.MiamiResidence.com

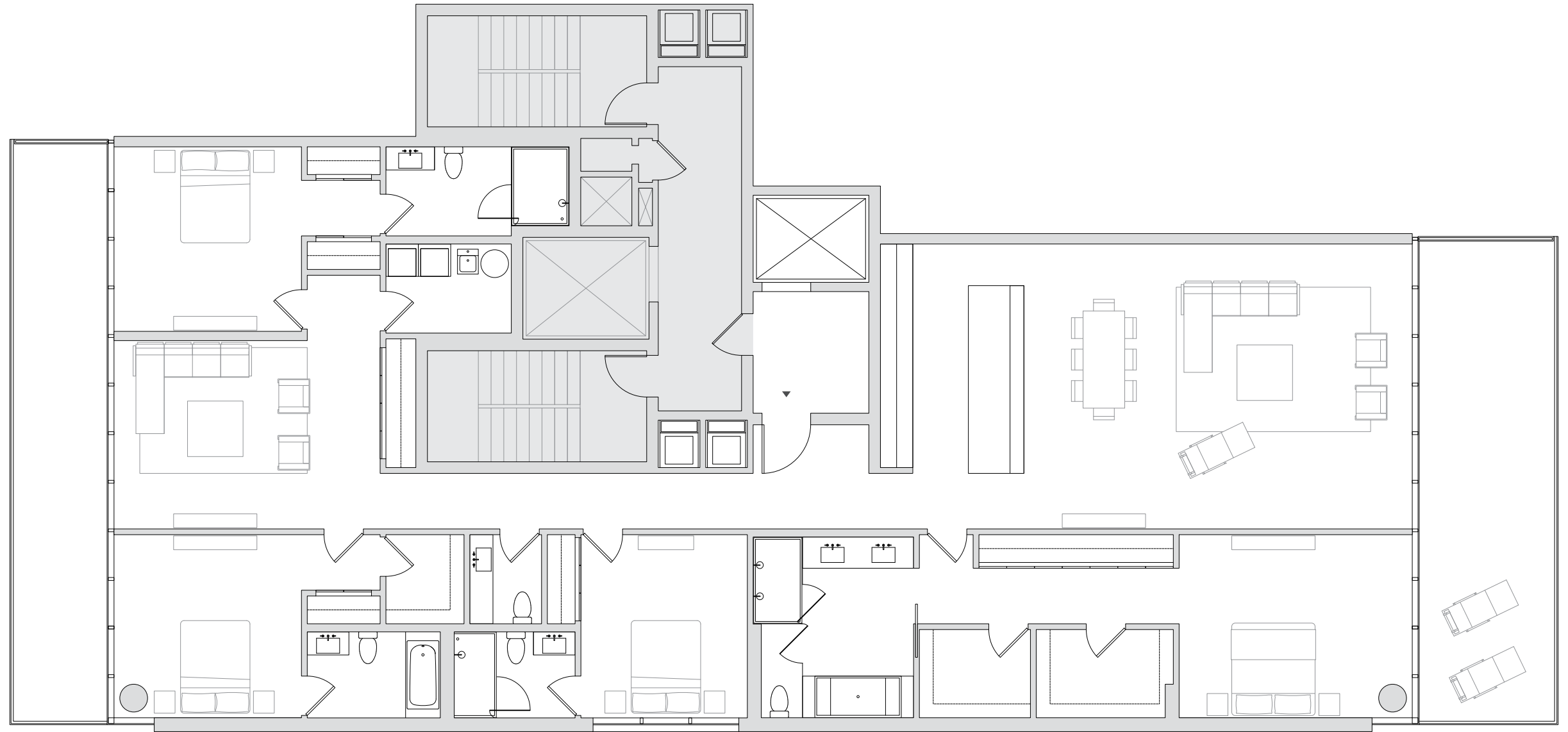


OCEANFRONT LINE 00

4 Bedrooms & Den // 4.5 Bathrooms
2 Balconies

3,227 sf // 300 m² Residence
644 sf // 60 m² Balconies

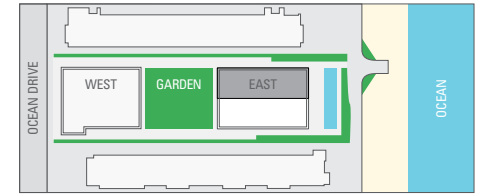
3,871 sf // 360 m² Total



STATED DIMENSIONS ARE MEASURED TO EXTERIOR BOUNDARIES OF THE EXTERIOR WALLS AND THE CENTERLINE OF INTERIOR DEMISING WALLS AND IN FACT VARY FROM THE DIMENSIONS THAT WOULD BE DETERMINED BY USING THE DESCRIPTION AND DEFINITION OF THE "UNIT" SET FORTH IN THE DECLARATION (WHICH GENERALLY ONLY INCLUDES THE INTERIOR AIRSPACE BETWEEN THE PERIMETER WALLS AND EXCLUDES INTERIOR STRUCTURAL COMPONENTS). FOR YOUR REFERENCE, THE AREA OF THE UNIT, DETERMINED IN ACCORDANCE WITH THOSE DEFINED UNIT BOUNDARIES, IS 2,926 SQ. FT. FOR UNIT 300-700 AND 2,948 FOR UNIT 800. NOTE THAT MEASUREMENTS OF ROOMS SET FORTH ON THIS FLOOR PLAN ARE GENERALLY TAKEN AT THE GREATEST POINTS OF EACH GIVEN ROOM (AS IF THE ROOM WERE A PERFECT RECTANGLE), WITHOUT REGARD FOR ANY CUTOUTS. ACCORDINGLY, THE AREA OF THE ACTUAL ROOM WILL TYPICALLY BE SMALLER THAN THE PRODUCT OBTAINED BY MULTIPLYING THE STATED LENGTH TIMES WIDTH. ALL DIMENSIONS ARE APPROXIMATE AND MAY VARY WITH ACTUAL CONSTRUCTION, AND ALL THE FLOOR PLANS AND DEVELOPMENT PLANS ARE SUBJECT TO CHANGE.

321 OCEAN ENRIQUE NORTEN SOUTH BEACH

Miami Residence Realty • 305-751-1000 • www.MiamiResidence.com

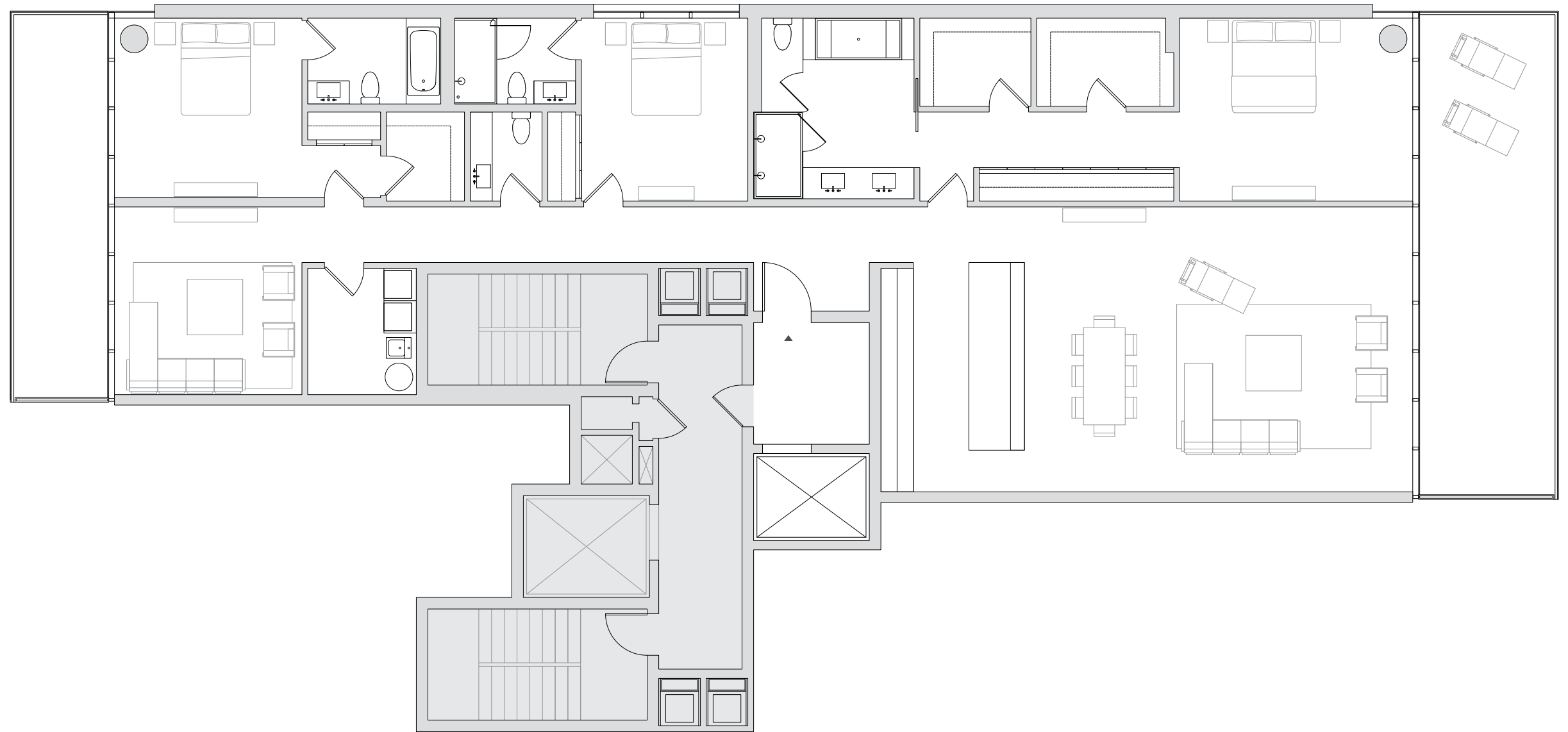


OCEANFRONT LINE 01

3 Bedrooms & Den // 3.5 Bathrooms
2 Balconies

2,775 sf // 258 m² Residence
546 sf // 51 m² Balconies

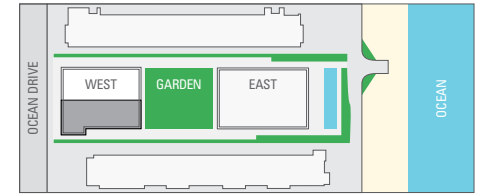
3,321 sf // 309 m² Total



STATED DIMENSIONS ARE MEASURED TO EXTERIOR BOUNDARIES OF THE EXTERIOR WALLS AND THE CENTERLINE OF INTERIOR DEMISING WALLS AND IN FACT VARY FROM THE DIMENSIONS THAT WOULD BE DETERMINED BY USING THE DESCRIPTION AND DEFINITION OF THE "UNIT" SET FORTH IN THE DECLARATION (WHICH GENERALLY ONLY INCLUDES THE INTERIOR AIRSPACE BETWEEN THE PERIMETER WALLS AND EXCLUDES INTERIOR STRUCTURAL COMPONENTS). FOR YOUR REFERENCE, THE AREA OF THE UNIT, DETERMINED IN ACCORDANCE WITH THOSE DEFINED UNIT BOUNDARIES, IS 2,530 SQ. FT. FOR UNIT 301-701 AND 2,549 FOR UNIT 801. NOTE THAT MEASUREMENTS OF ROOMS SET FORTH ON THIS FLOOR PLAN ARE GENERALLY TAKEN AT THE GREATEST POINTS OF EACH GIVEN ROOM (AS IF THE ROOM WERE A PERFECT RECTANGLE), WITHOUT REGARD FOR ANY CUTOUTS. ACCORDINGLY, THE AREA OF THE ACTUAL ROOM WILL TYPICALLY BE SMALLER THAN THE PRODUCT OBTAINED BY MULTIPLYING THE STATED LENGTH TIMES WIDTH. ALL DIMENSIONS ARE APPROXIMATE AND MAY VARY WITH ACTUAL CONSTRUCTION, AND ALL THE FLOOR PLANS AND DEVELOPMENT PLANS ARE SUBJECT TO CHANGE.

321 OCEAN ENRIQUE NORTEN SOUTH BEACH

Miami Residence Realty • 305-751-1000 • www.MiamiResidence.com

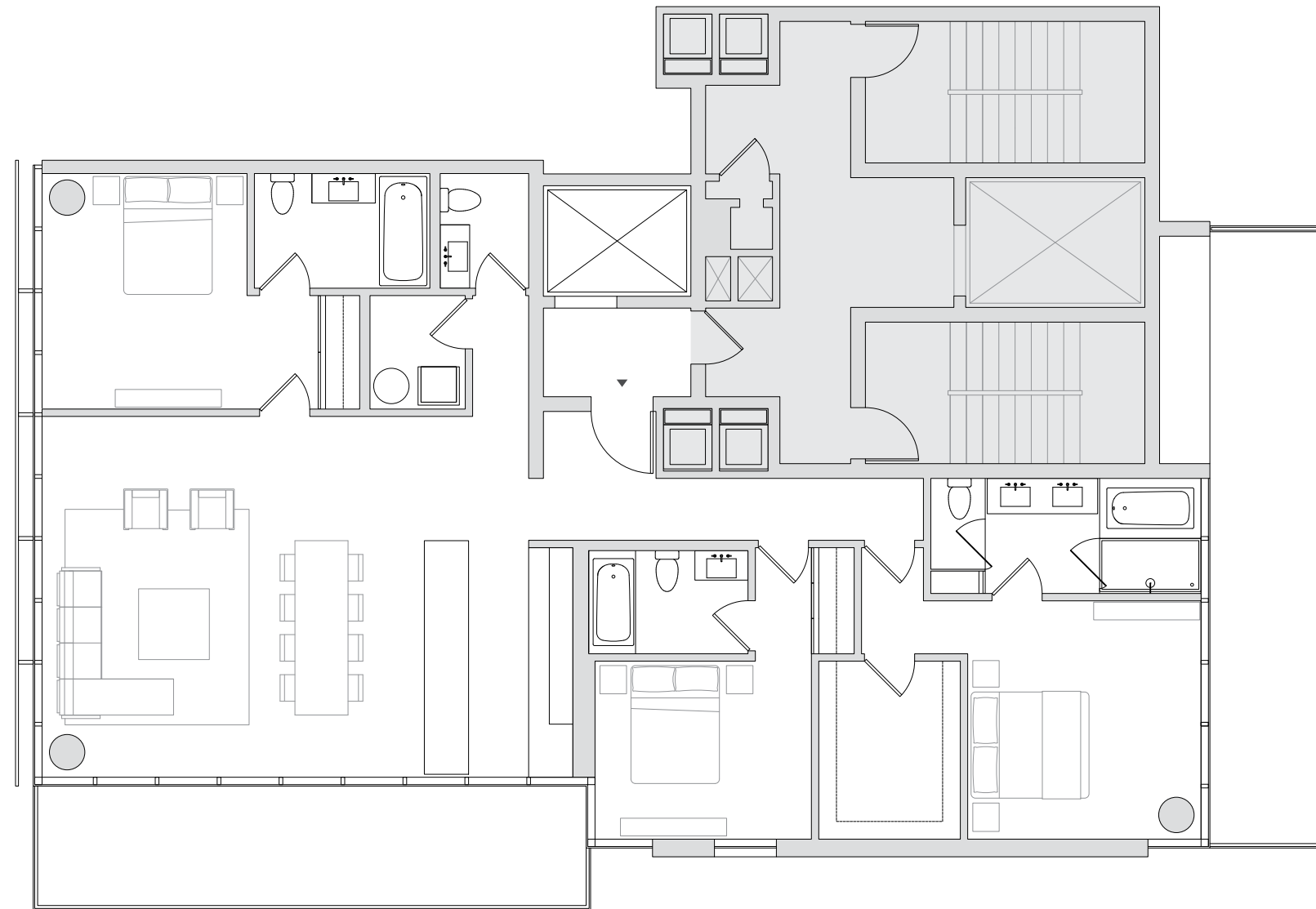


OCEAN DRIVE LINE 02

3 Bedrooms // 3.5 Bathrooms // 2 Balconies

1,904 sf // 177 m² Residence
490 sf // 46 m² Balconies

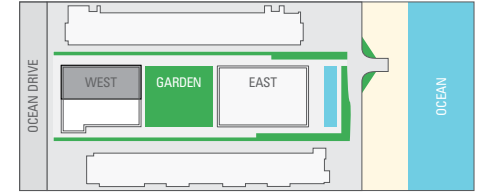
2,394 sf // 222 m² Total



STATED DIMENSIONS ARE MEASURED TO EXTERIOR BOUNDARIES OF THE EXTERIOR WALLS AND THE CENTERLINE OF INTERIOR DEMISING WALLS AND IN FACT VARY FROM THE DIMENSIONS THAT WOULD BE DETERMINED BY USING THE DESCRIPTION AND DEFINITION OF THE "UNIT" SET FORTH IN THE DECLARATION (WHICH GENERALLY ONLY INCLUDES THE INTERIOR AIRSPACE BETWEEN THE PERIMETER WALLS AND EXCLUDES INTERIOR STRUCTURAL COMPONENTS). FOR YOUR REFERENCE, THE AREA OF THE UNIT, DETERMINED IN ACCORDANCE WITH THOSE DEFINED UNIT BOUNDARIES, IS 1,730 SQ. FT. NOTE THAT MEASUREMENTS OF ROOMS SET FORTH ON THIS FLOOR PLAN ARE GENERALLY TAKEN AT THE GREATEST POINTS OF EACH GIVEN ROOM (AS IF THE ROOM WERE A PERFECT RECTANGLE), WITHOUT REGARD FOR ANY CUTOUTS. ACCORDINGLY, THE AREA OF THE ACTUAL ROOM WILL TYPICALLY BE SMALLER THAN THE PRODUCT OBTAINED BY MULTIPLYING THE STATED LENGTH TIMES WIDTH. ALL DIMENSIONS ARE APPROXIMATE AND MAY VARY WITH ACTUAL CONSTRUCTION, AND ALL THE FLOOR PLANS AND DEVELOPMENT PLANS ARE SUBJECT TO CHANGE.

321 OCEAN ENRIQUE NORTEN SOUTH BEACH

Miami Residence Realty • 305-751-1000 • www.MiamiResidence.com

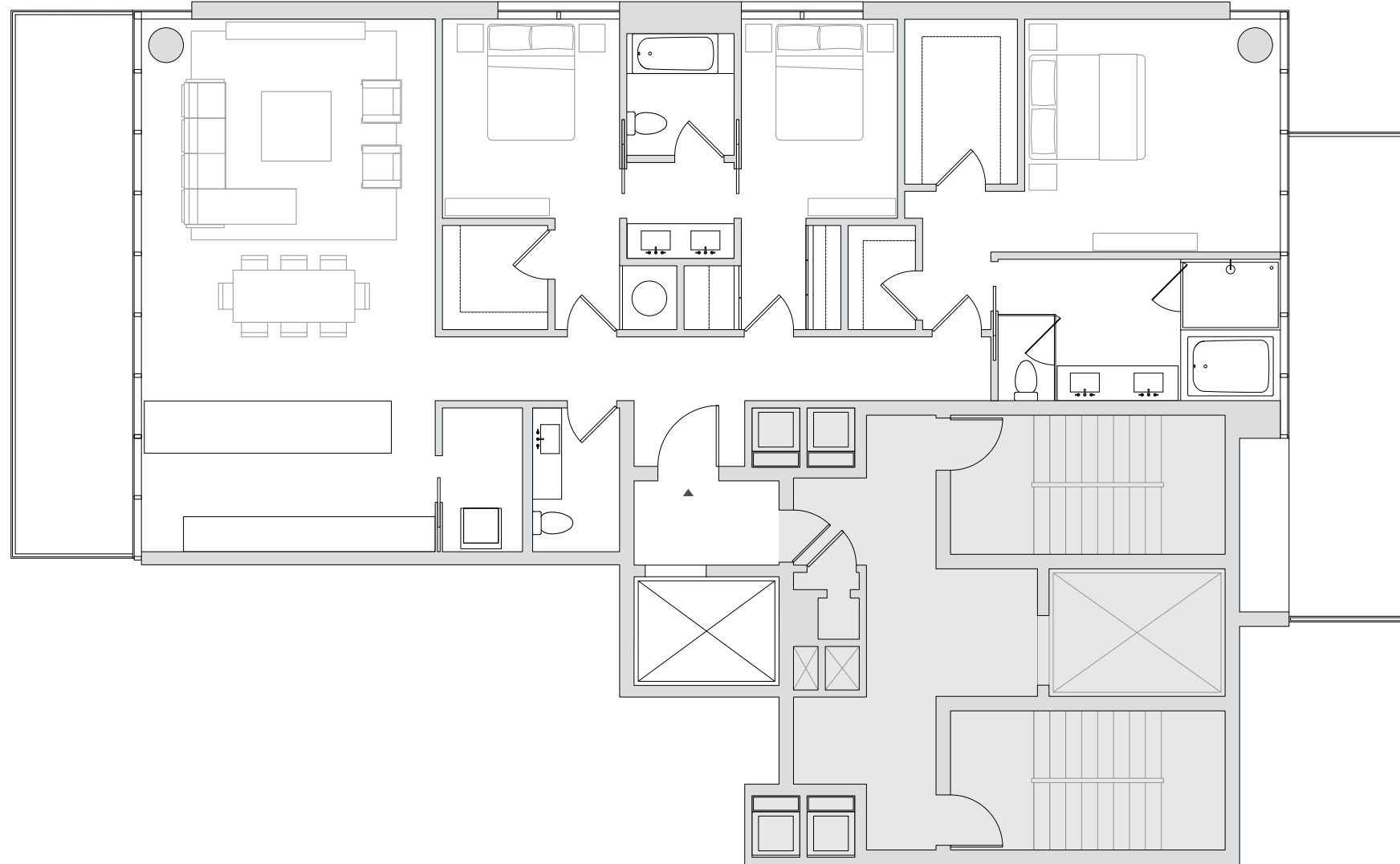


OCEAN DRIVE LINE 03

3 Bedrooms // 2.5 Bathrooms // 2 Balconies

1,877 sf // 174 m² Residence
449 sf // 42 m² Balconies

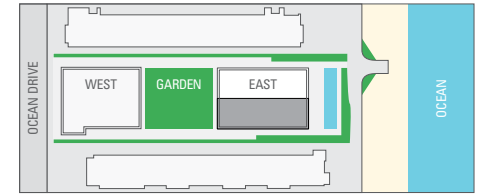
2,326 sf // 216 m² Total



STATED DIMENSIONS ARE MEASURED TO EXTERIOR BOUNDARIES OF THE EXTERIOR WALLS AND THE CENTERLINE OF INTERIOR DEMISING WALLS AND IN FACT VARY FROM THE DIMENSIONS THAT WOULD BE DETERMINED BY USING THE DESCRIPTION AND DEFINITION OF THE "UNIT" SET FORTH IN THE DECLARATION (WHICH GENERALLY ONLY INCLUDES THE INTERIOR AIRSPACE BETWEEN THE PERIMETER WALLS AND EXCLUDES INTERIOR STRUCTURAL COMPONENTS). FOR YOUR REFERENCE, THE AREA OF THE UNIT, DETERMINED IN ACCORDANCE WITH THOSE DEFINED UNIT BOUNDARIES, IS 1,705 SQ. FT. NOTE THAT MEASUREMENTS OF ROOMS SET FORTH ON THIS FLOOR PLAN ARE GENERALLY TAKEN AT THE GREATEST POINTS OF EACH GIVEN ROOM (AS IF THE ROOM WERE A PERFECT RECTANGLE), WITHOUT REGARD FOR ANY CUTOUTS. ACCORDINGLY, THE AREA OF THE ACTUAL ROOM WILL TYPICALLY BE SMALLER THAN THE PRODUCT OBTAINED BY MULTIPLYING THE STATED LENGTH TIMES WIDTH. ALL DIMENSIONS ARE APPROXIMATE AND MAY VARY WITH ACTUAL CONSTRUCTION, AND ALL THE FLOOR PLANS AND DEVELOPMENT PLANS ARE SUBJECT TO CHANGE.

321 OCEAN ENRIQUE NORTEN SOUTH BEACH

Miami Residence Realty • 305-751-1000 • www.MiamiResidence.com

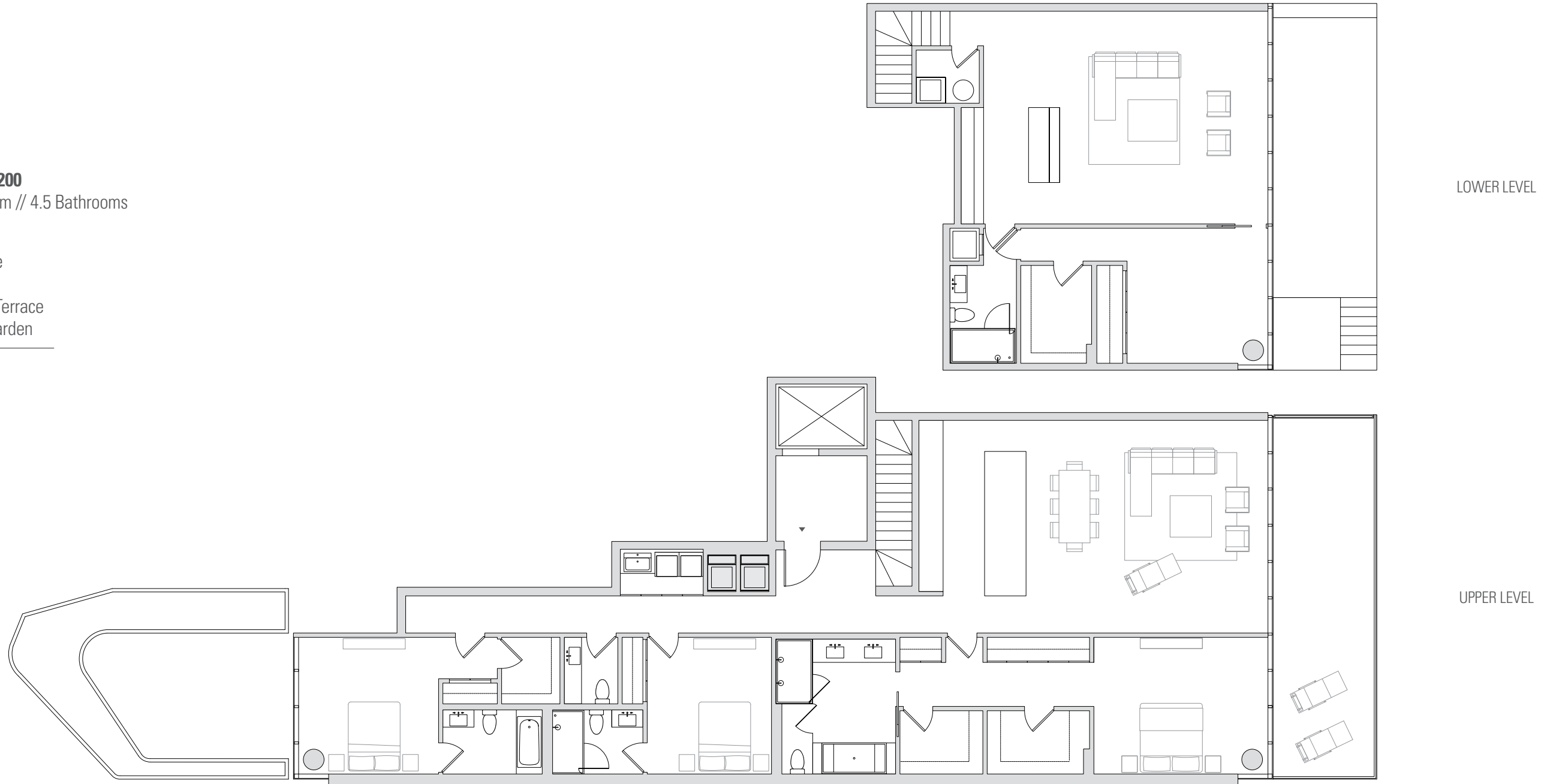


TWO-STORY BEACH VILLA 200

3 Bedrooms, Den & Media Room // 4.5 Bathrooms
Balcony & 2 Private Gardens

3,745 sf // 348 m² Residence
350 sf // 33 m² Balcony
421 sf // 39 m² Poolside Terrace
229 sf // 21 m² Private Garden

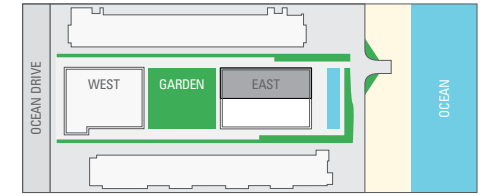
4,745 sf // 441 m² Total



STATED DIMENSIONS ARE MEASURED TO EXTERIOR BOUNDARIES OF THE EXTERIOR WALLS AND THE CENTERLINE OF INTERIOR DEMISING WALLS AND IN FACT VARY FROM THE DIMENSIONS THAT WOULD BE DETERMINED BY USING THE DESCRIPTION AND DEFINITION OF THE "UNIT" SET FORTH IN THE DECLARATION (WHICH GENERALLY ONLY INCLUDES THE INTERIOR AIRSPACE BETWEEN THE PERIMETER WALLS AND EXCLUDES INTERIOR STRUCTURAL COMPONENTS). FOR YOUR REFERENCE, THE AREA OF THE UNIT, DETERMINED IN ACCORDANCE WITH THOSE DEFINED UNIT BOUNDARIES, IS 3,440 SQ. FT. NOTE THAT MEASUREMENTS OF ROOMS SET FORTH ON THIS FLOOR PLAN ARE GENERALLY TAKEN AT THE GREATEST POINTS OF EACH GIVEN ROOM (AS IF THE ROOM WERE A PERFECT RECTANGLE), WITHOUT REGARD FOR ANY CUTOUTS. ACCORDINGLY, THE AREA OF THE ACTUAL ROOM WILL TYPICALLY BE SMALLER THAN THE PRODUCT OBTAINED BY MULTIPLYING THE STATED LENGTH TIMES WIDTH. ALL DIMENSIONS ARE APPROXIMATE AND MAY VARY WITH ACTUAL CONSTRUCTION, AND ALL THE FLOOR PLANS AND DEVELOPMENT PLANS ARE SUBJECT TO CHANGE.

321 OCEAN ENRIQUE NORTEN SOUTH BEACH

Miami Residence Realty • 305-751-1000 • www.MiamiResidence.com

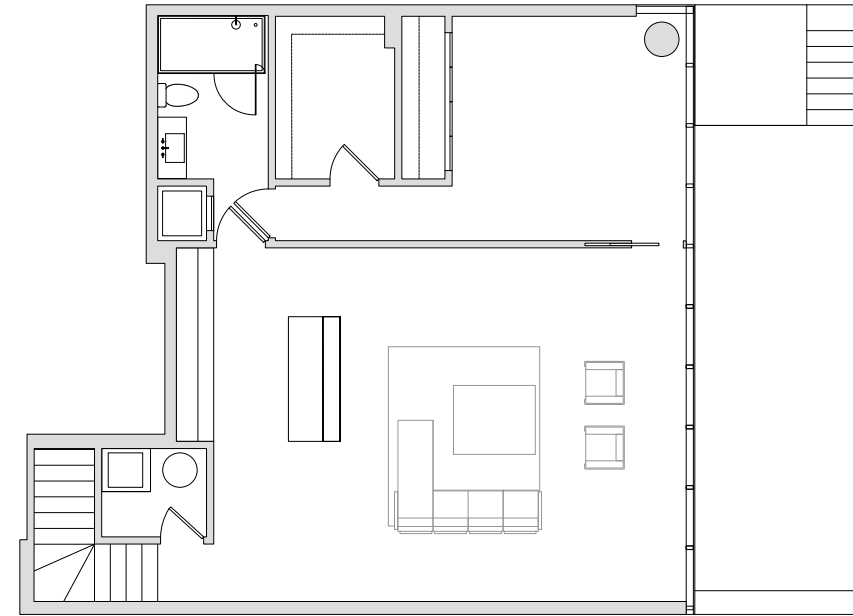


TWO-STORY BEACH VILLA 201

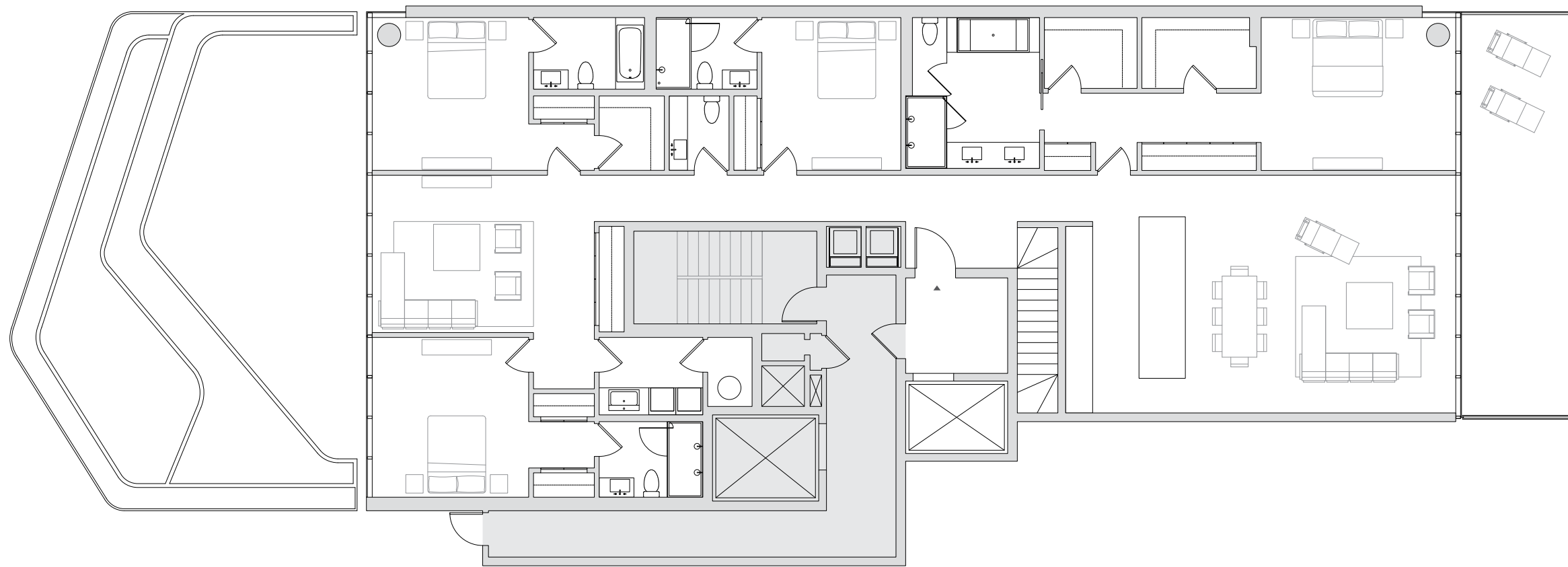
4 Bedrooms, Den & Media Room // 5.5 Bathrooms
Balcony & 2 Private Gardens

4,431 sf // 412 m² Residence
350 sf // 33 m² Balcony
421 sf // 39 m² Poolside Terrace
512 sf // 48 m² Private Garden

5,714 sf // 531 m² Total



LOWER LEVEL



UPPER LEVEL

STATED DIMENSIONS ARE MEASURED TO EXTERIOR BOUNDARIES OF THE EXTERIOR WALLS AND THE CENTERLINE OF INTERIOR DEMISING WALLS AND IN FACT VARY FROM THE DIMENSIONS THAT WOULD BE DETERMINED BY USING THE DESCRIPTION AND DEFINITION OF THE "UNIT" SET FORTH IN THE DECLARATION (WHICH GENERALLY ONLY INCLUDES THE INTERIOR AIRSPACE BETWEEN THE PERIMETER WALLS AND EXCLUDES INTERIOR STRUCTURAL COMPONENTS). FOR YOUR REFERENCE, THE AREA OF THE UNIT, DETERMINED IN ACCORDANCE WITH THOSE DEFINED UNIT BOUNDARIES, IS 3,970 SQ. FT. NOTE THAT MEASUREMENTS OF ROOMS SET FORTH ON THIS FLOOR PLAN ARE GENERALLY TAKEN AT THE GREATEST POINTS OF EACH GIVEN ROOM (AS IF THE ROOM WERE A PERFECT RECTANGLE), WITHOUT REGARD FOR ANY CUTOUTS. ACCORDINGLY, THE AREA OF THE ACTUAL ROOM WILL TYPICALLY BE SMALLER THAN THE PRODUCT OBTAINED BY MULTIPLYING THE STATED LENGTH TIMES WIDTH. ALL DIMENSIONS ARE APPROXIMATE AND MAY VARY WITH ACTUAL CONSTRUCTION, AND ALL THE FLOOR PLANS AND DEVELOPMENT PLANS ARE SUBJECT TO CHANGE.