

Miami Residence Realty

305-751-1000

www.MiamiResidence.com



MARINA PALMS

YACHT CLUB & RESIDENCES

M I A M I

WATERFRONT LIVING,
Inspired by Life on the Water.



MARINA PALMS

YACHT CLUB & RESIDENCES

M I A M I

Marina Palms Yacht Club & Residences brings the yachting lifestyle back to Miami with the county's first luxury condominium and yacht club development in two decades.

The luxury condominium development will pamper residents with white-glove amenities, high-end finishes and unparalleled, personalized services, while the private, full-service marina will offer 112 boat slips for yachts up to 90 feet in length, and deepwater access to Haulover Inlet, just 20 minutes away.



OWN THE WATER

INFINITY POOL



All artist's or architectural conceptual renderings, plans, specifications, features, dimensions, amenities, existing or future views and photos depicted or otherwise described herein are based upon preliminary development plans, and are subject to architectural revisions and other changes, without notice, in the manner provided in the purchase agreement and the offering circular. All features listed for the residences are representative only, and the Developer reserves the right, without notice to or approval by the Buyer, to make changes or substitutions of equal or better quality for any features, materials and equipment which are included with the unit. The dimensions of units stated or shown in brochures will vary from the dimensions that would be determined based upon the description of the Unit boundaries set forth in the Declaration of Condominium.



AMENITIES

BUILDING FEATURES

Gated entry
Secure garage parking
24-hour professional security and video surveillance
WiFi throughout all common areas
e-Concierge app for iPad/mobile access to Marina Palm's wide array of services and amenities.
High-speed elevators
Lavish spa with sauna, steam and private treatment rooms
Men's & women's locker rooms
State-of-the-art fitness center
Professional grade studio for yoga/pilates
News café with daily newspaper service
Club room with 100"+ television
Billiards table with bar
Executive business lounge with conference room
Pet-friendly environment

MARINA

112-slip private marina for yachts up to 90 feet in length
Full-time dock master
Full service yacht club concierge
Fueling services
Dockside high speed internet and cable TV
Well-equipped sundry store
Picturesque marina promenade

OUTDOOR AMENITIES

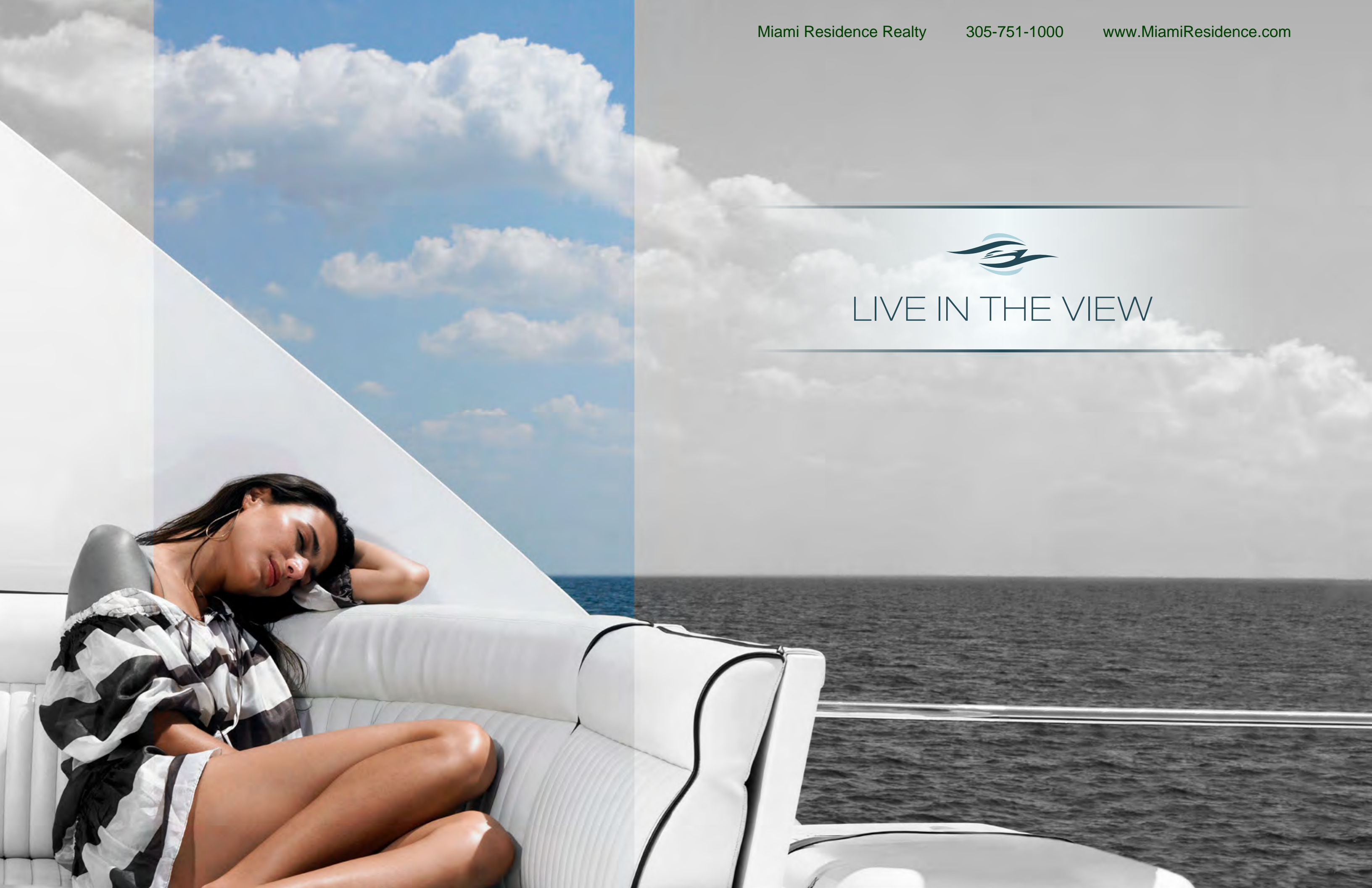
Water sports including jet skiing, kayaking, water skiing, wind surfing and snorkeling
Lushly landscaped, 14-acre lifestyle enclave on 750 linear feet of prime waterfront
Resort-style pool deck with infinity pool, hot tub and stunning waterfront views
Outdoor gourmet kitchen
Dedicated children's pool
Children's outdoor playground
Convenient dog park access at East Greynolds Park
Pet station

SERVICES

24-hour valet parking
Personal butler service
On-site car wash service and detailing
Pool attendants
Tennis club membership
Pet spa services
Activity rooms for children and teens



LIVE IN THE VIEW



Miami Residence Realty

305-751-1000

www.MiamiResidence.com

FULL-SERVICE MARINA



All artist's or architectural conceptual renderings, plans, specifications, features, dimensions, amenities, existing or future views and photos depicted or otherwise described herein are based upon preliminary development plans, and are subject to architectural revisions and other changes, without notice, in the manner provided in the purchase agreement and the offering circular. All features listed for the residences are representative only, and the Developer reserves the right, without notice to or approval by the Buyer, to make changes or substitutions of equal or better quality for any features, materials and equipment which are included with the unit. The dimensions of units stated or shown in brochures will vary from the dimensions that would be determined based upon the description of the Unit boundaries set forth in the Declaration of Condominium.



RESIDENCE FEATURES

Imported Italian kitchen cabinetry by Snaidero with stone countertops

Grohe bathroom fixtures

Subzero and Wolf appliances

Elegant floating Italian bathroom vanities by Snaidero

Frameless glass enclosed showers with hand-held head in bathrooms

Generous 8-foot deep private terraces with glass railings

Expansive marina and panoramic water views of Intracoastal and beyond

Freestanding soaking tub in master bathroom

Large walk-in closets

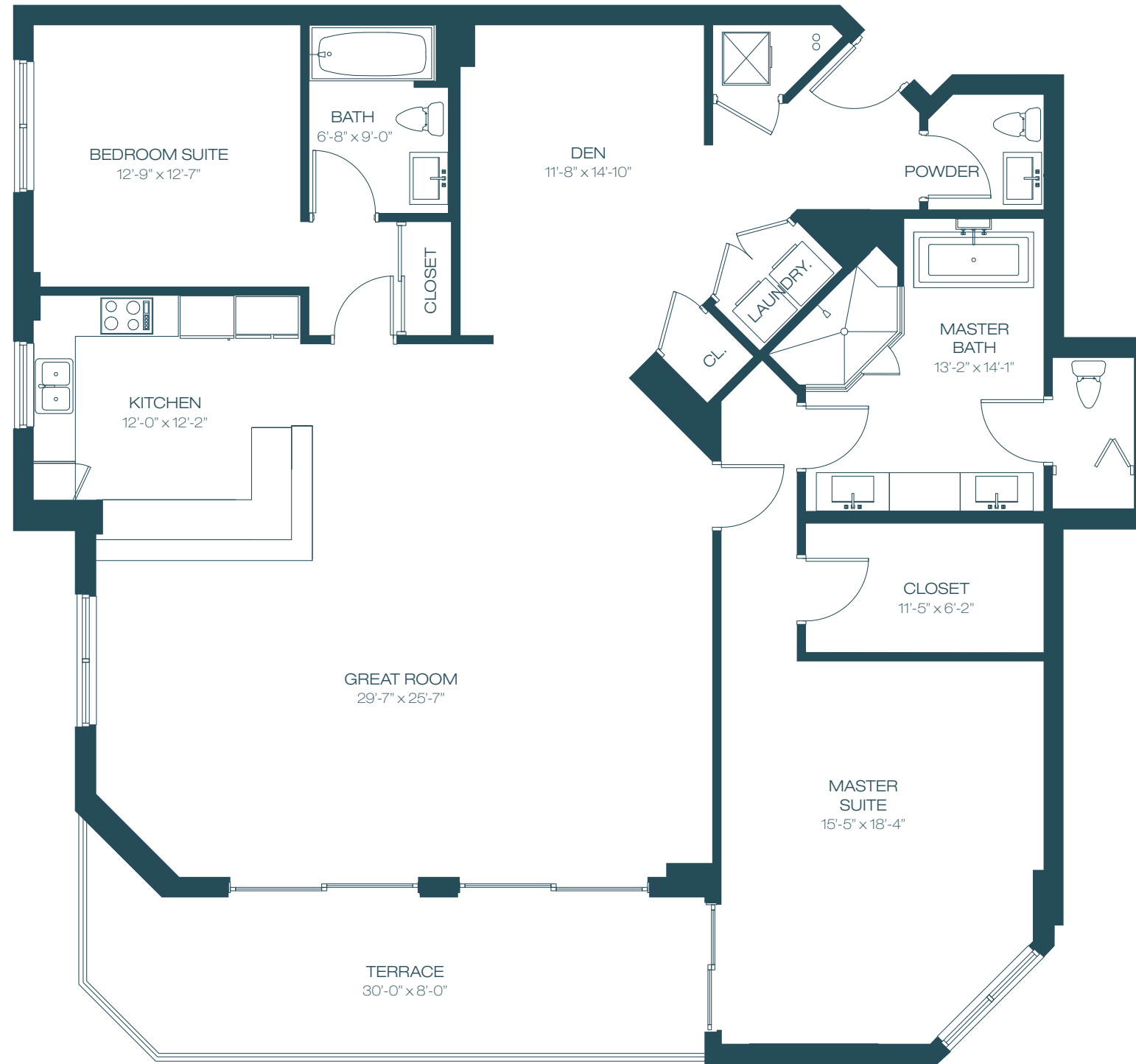
Smart technology ready

Solid core doors throughout

Sound insulated walls throughout

Spacious open floor plans with ceilings heights in excess of 9'

Full-sized, front loaded washer and dryer in every residence

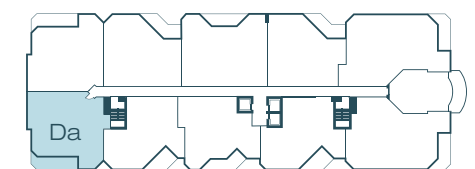


INTRACOASTAL

UNIT Da

2	BEDROOMS + DEN	2.5	BATHROOMS
INTERIOR		2,156 SF	200 M
TERRACE		241 SF	22 M
TOTAL		2,397 SF	223 M

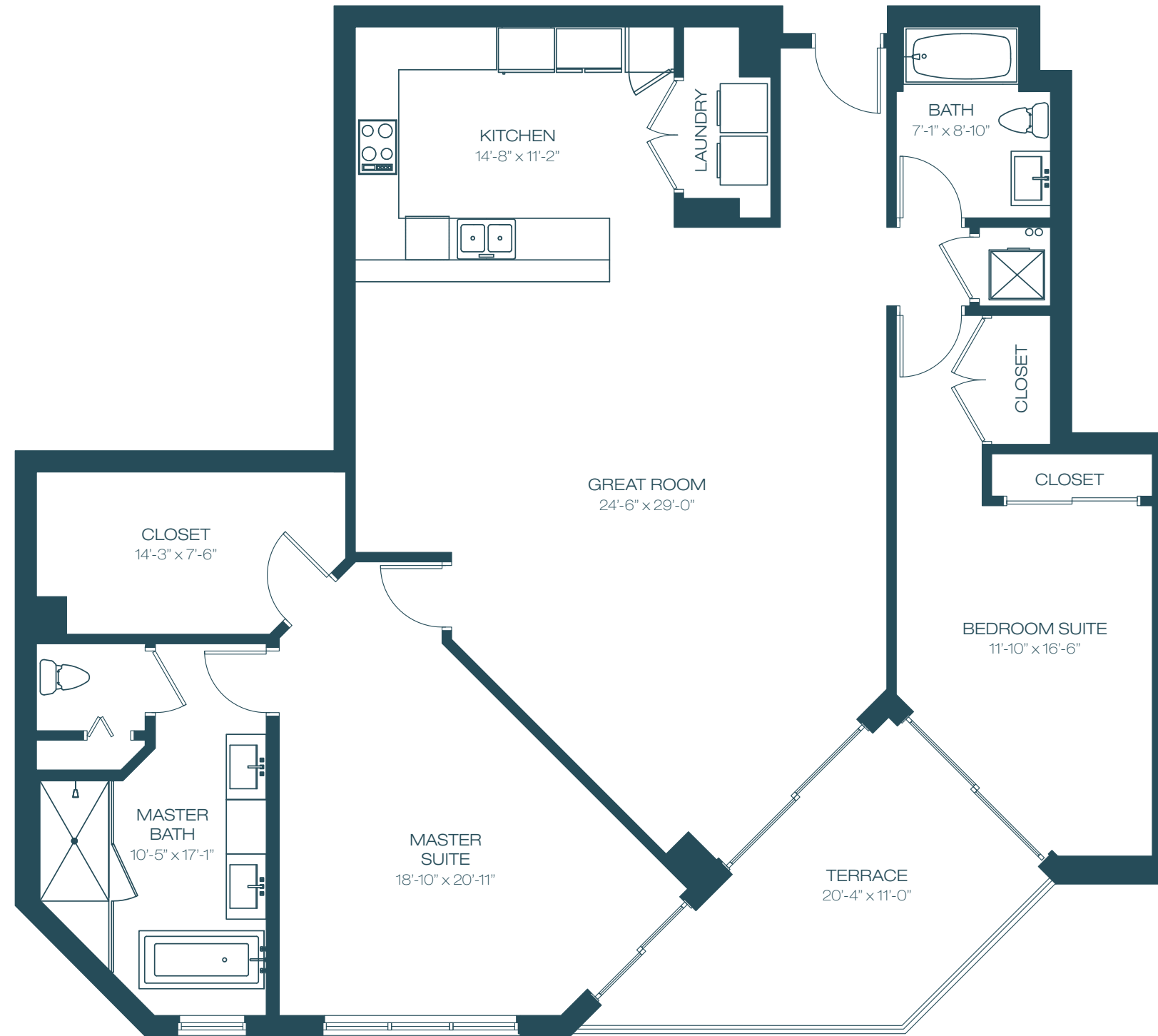
17201 BISCAYNE BOULEVARD, NORTH MIAMI BEACH, FL 33162



INTRACOASTAL

N
KEY PLAN - UNIT LOCATION

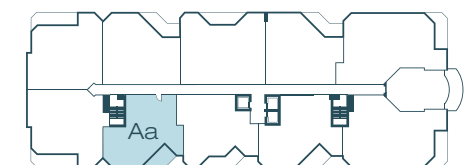
All dimensions are approximate and all floor plans and development plans are subject to change. This floor plan represents the typical floor plan for the residence type indicated and is provided for informational purposes only. The actual floor plan of the residence may differ. All features listed for the residences are representative only, and the Developer reserves the right, without notice to or approval by the Buyer, to make changes or substitutions of equal or better quality for any features, materials and equipment. All dimensions are taken to the outside finished surface of the exterior walls, and to the centerline of interior demising walls, and vary from the dimensions that would be determined based upon the description of the "Unit" set forth in the Declaration of Condominium (which generally includes only the interior airspace between the unfinished interior surfaces of the walls bounding the unit). All sketches, renderings, graphic materials, plans, specifications, terms, conditions, and statements contained in this brochure are proposed and conceptual only and do not necessarily reflect the final plans and specifications for the development. Further, developer reserves the right to modify, revise, or withdraw any or all of sale in its sole discretion and without prior notice.



INTRACOASTAL

UNIT Aa

2	BEDROOMS	2	BATHROOMS
INTERIOR	1,821 SF	169M	
TERRACE	169 SF	16 M	
TOTAL		1,990 SF	185 M

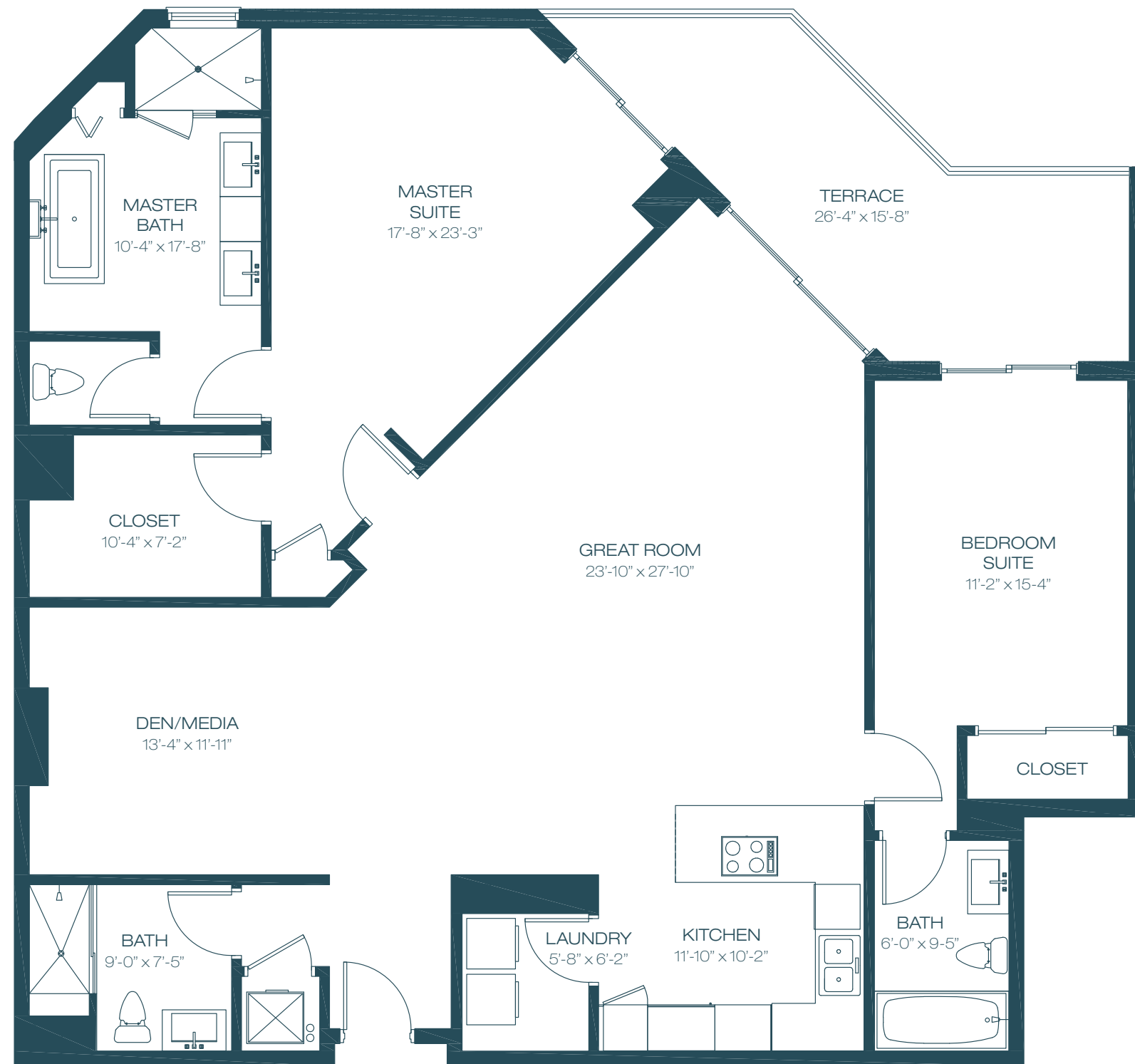


INTRACOASTAL

N
KEY PLAN - UNIT LOCATION

17201 BISCAYNE BOULEVARD, NORTH MIAMI BEACH, FL 33162

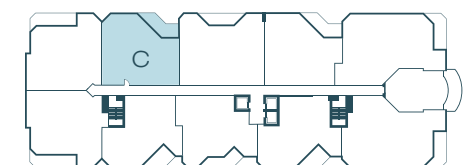
All dimensions are approximate and all floor plans and development plans are subject to change. This floor plan represents the typical floor plan for the residence type indicated and is provided for informational purposes only. The actual floor plan of the residence may differ. All features listed for the residences are representative only, and the Developer reserves the right, without notice to or approval by the Buyer, to make changes or substitutions of equal or better quality for any features, materials and equipment. All dimensions are taken to the outside finished surface of the exterior walls, and to the centerline of interior demising walls, and vary from the dimensions that would be determined based upon the description of the "Unit" set forth in the Declaration of Condominium (which generally includes only the interior airspace between the unfinished interior surfaces of the walls bounding the unit). All sketches, renderings, graphic materials, plans, specifications, terms, conditions, and statements contained in this brochure are proposed and conceptual only and do not necessarily reflect the final plans and specifications for the development. Further, developer reserves the right to modify, revise, or withdraw any or all of sale in its sole discretion and without prior notice.



UNIT C

2	BEDROOMS + DEN	3	BATHROOMS
INTERIOR	1,961 SF		182 M
TERRACE	210 SF		20 M
TOTAL	2,171 SF		202 M

17201 BISCAYNE BOULEVARD, NORTH MIAMI BEACH, FL 33162

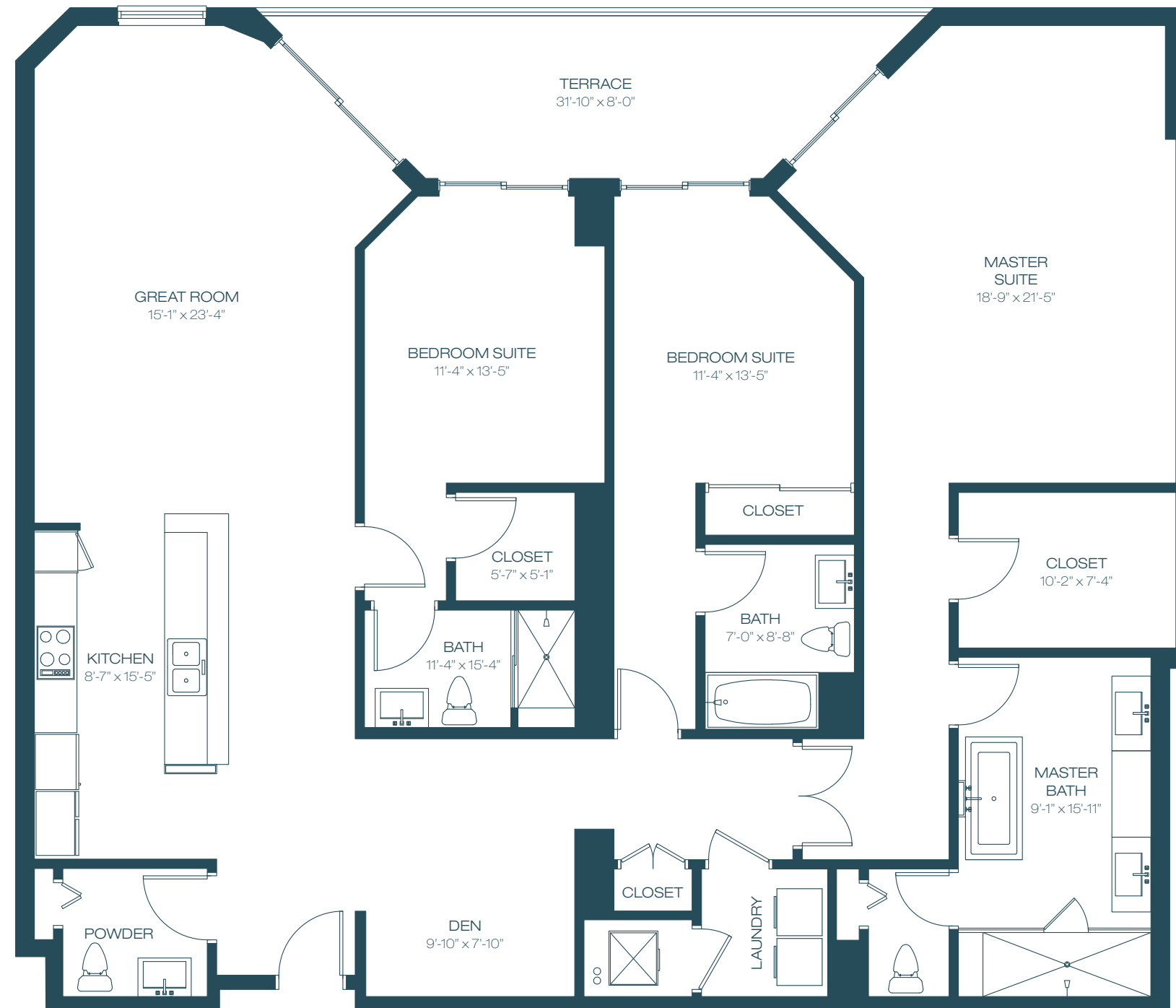


KEY PLAN - UNIT LOCATION

INTRACOASTAL

INTRACOASTAL

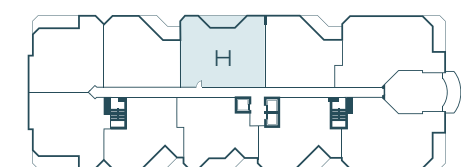
All dimensions are approximate and all floor plans and development plans are subject to change. This floor plan represents the typical floor plan for the residence type indicated and is provided for informational purposes only. The actual floor plan of the residence may differ. All features listed for the residences are representative only, and the Developer reserves the right, without notice to or approval by the Buyer, to make changes or substitutions of equal or better quality for any features, materials and equipment. All dimensions are taken to the outside finished surface of the exterior walls, and to the centerline of interior demising walls, and vary from the dimensions that would be determined based upon the description of the "Unit" set forth in the Declaration of Condominium (which generally includes only the interior airspace between the unfinished interior surfaces of the walls bounding the unit). All sketches, renderings, graphic materials, plans, specifications, terms, conditions, and statements contained in this brochure are proposed and conceptual only and do not necessarily reflect the final plans and specifications for the development. Further, developer reserves the right to modify, revise, or withdraw any or all of sale in its sole discretion and without prior notice.



UNIT H

3	BEDROOMS + DEN	3.5	BATHROOMS
INTERIOR	2,332 SF	217 M	
TERRACE	190 SF	18 M	
<hr/>			
TOTAL	2,522 SF	234 M	

17201 BISCAYNE BOULEVARD, NORTH MIAMI BEACH, FL 33162



N
KEY PLAN - UNIT LOCATION

INTRACOASTAL

INTRACOASTAL

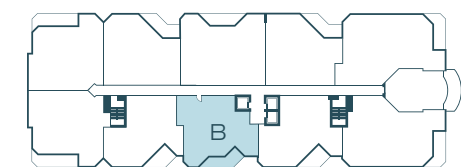
All dimensions are approximate and all floor plans and development plans are subject to change. This floor plan represents the typical floor plan for the residence type indicated and is provided for informational purposes only. The actual floor plan of the residence may differ. All features listed for the residences are representative only, and the Developer reserves the right, without notice to or approval by the Buyer, to make changes or substitutions of equal or better quality for any features, materials and equipment. All dimensions are taken to the outside finished surface of the exterior walls, and to the centerline of interior demising walls, and vary from the dimensions that would be determined based upon the description of the "Unit" set forth in the Declaration of Condominium (which generally includes only the interior airspace between the unfinished interior surfaces of the walls bounding the unit). All sketches, renderings, graphic materials, plans, specifications, terms, conditions, and statements contained in this brochure are proposed and conceptual only and do not necessarily reflect the final plans and specifications for the development. Further, developer reserves the right to modify, revise, or withdraw any or all of sale in its sole discretion and without prior notice.



UNIT B

2	BEDROOMS	2.5	BATHROOMS
INTERIOR		1,873 SF	174 M
TERRACE		198 SF	18 M
TOTAL		2,071 SF	192 M

17201 BISCAYNE BOULEVARD, NORTH MIAMI BEACH, FL 33162

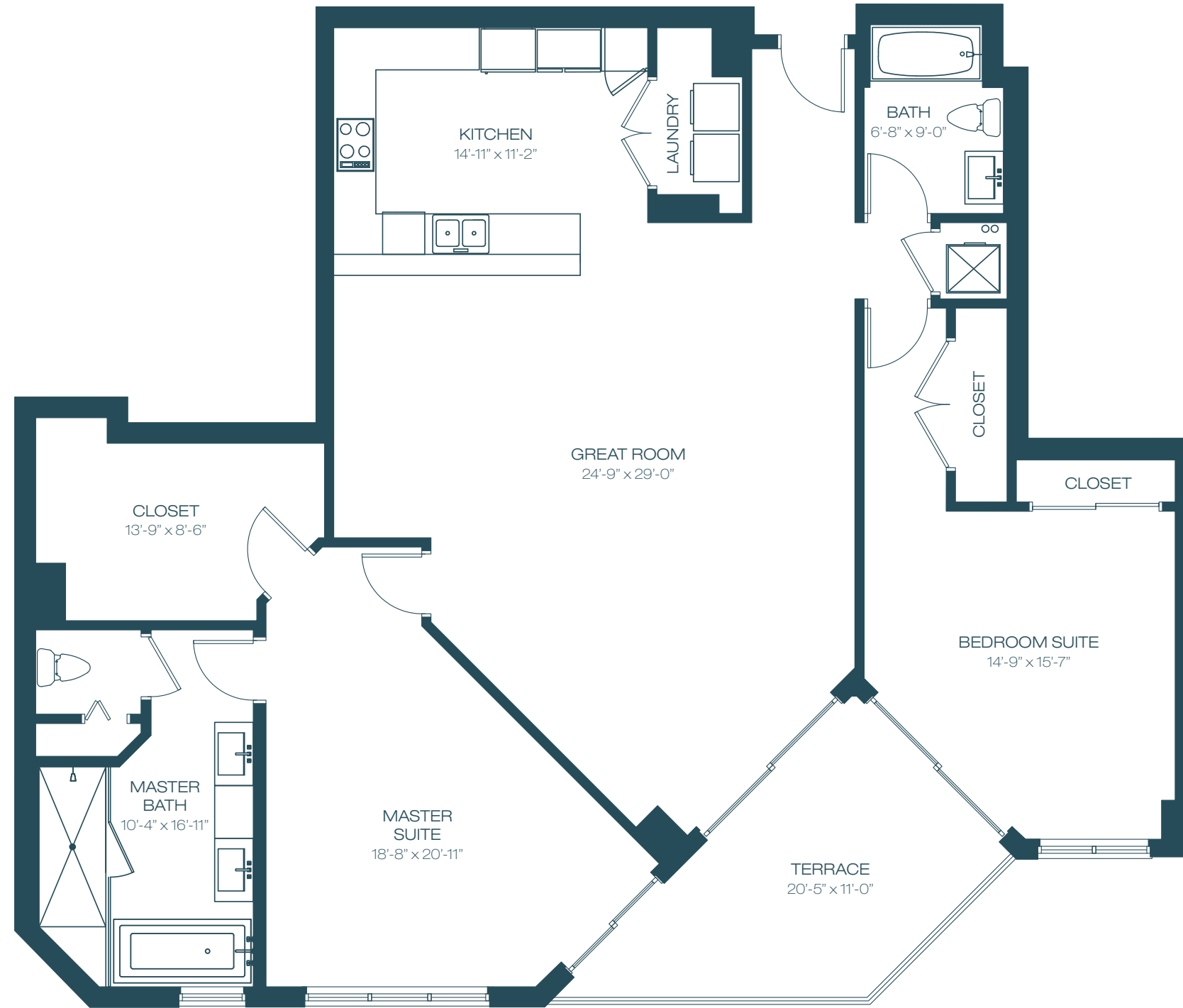


KEY PLAN - UNIT LOCATION

INTRACOASTAL

INTRACOASTAL

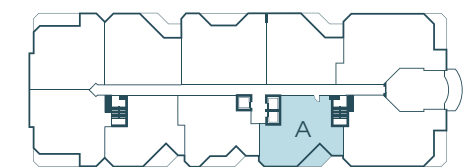
All dimensions are approximate and all floor plans and development plans are subject to change. This floor plan represents the typical floor plan for the residence type indicated and is provided for informational purposes only. The actual floor plan of the residence may differ. All features listed for the residences are representative only, and the Developer reserves the right, without notice to or approval by the Buyer, to make changes or substitutions of equal or better quality for any features, materials and equipment. All dimensions are taken to the outside finished surface of the exterior walls, and to the centerline of interior demising walls, and vary from the dimensions that would be determined based upon the description of the "Unit" set forth in the Declaration of Condominium (which generally includes only the interior airspace between the unfinished interior surfaces of the walls bounding the unit). All sketches, renderings, graphic materials, plans, specifications, terms, conditions, and statements contained in this brochure are proposed and conceptual only and do not necessarily reflect the final plans and specifications for the development. Further, developer reserves the right to modify, revise, or withdraw any or all of sale in its sole discretion and without prior notice.



UNIT A

2	BEDROOMS	2	BATHROOMS
INTERIOR	1,904 SF	177 M	
TERRACE	169 SF	16 M	
<hr/>			
TOTAL	2,073 SF	193 M	

17201 BISCAYNE BOULEVARD, NORTH MIAMI BEACH, FL 33162

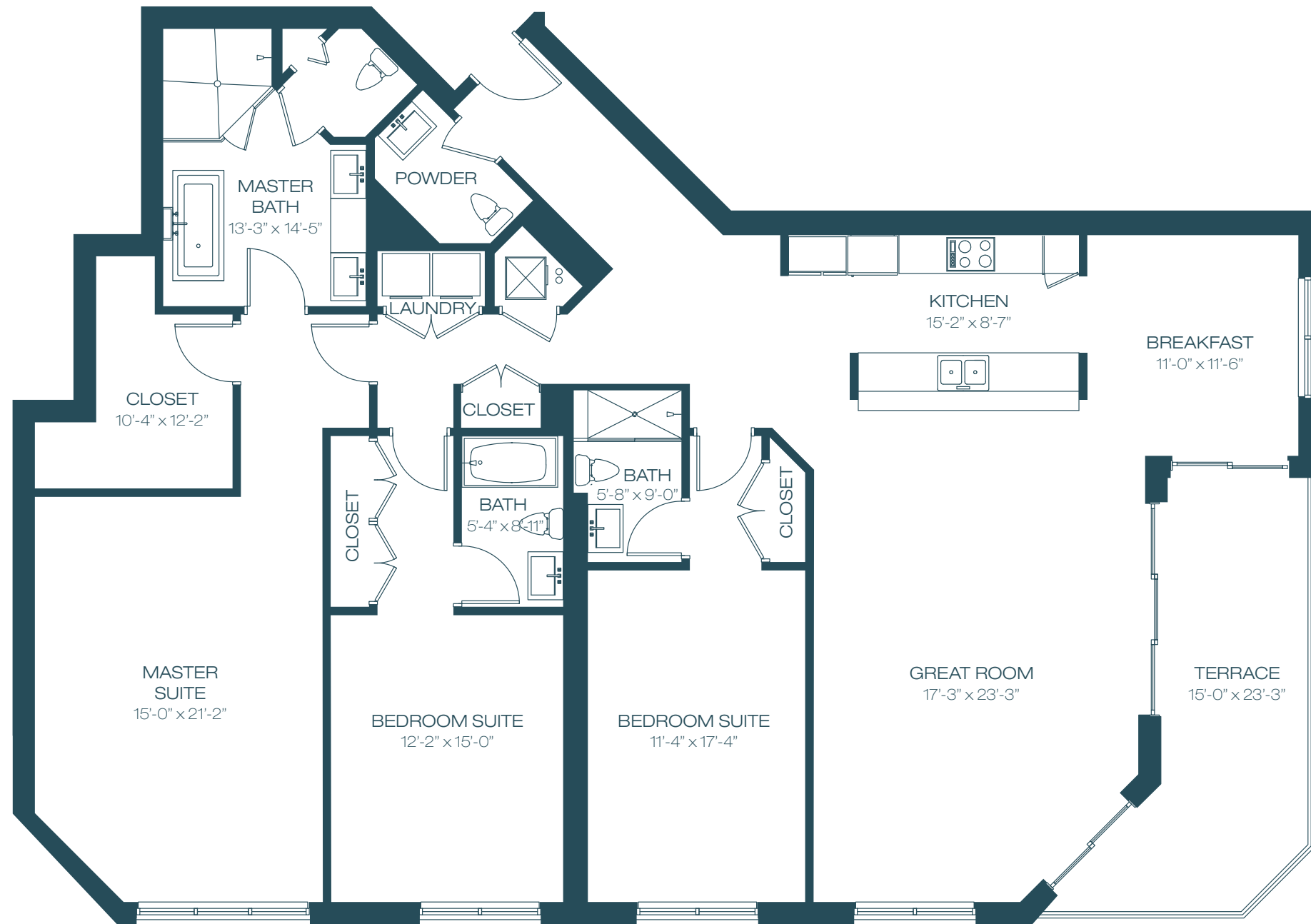


N
KEY PLAN - UNIT LOCATION

INTRACOASTAL

INTRACOASTAL

All dimensions are approximate and all floor plans and development plans are subject to change. This floor plan represents the typical floor plan for the residence type indicated and is provided for informational purposes only. The actual floor plan of the residence may differ. All features listed for the residences are representative only, and the Developer reserves the right, without notice to or approval by the Buyer, to make changes or substitutions of equal or better quality for any features, materials and equipment. All dimensions are taken to the outside finished surface of the exterior walls, and to the centerline of interior demising walls, and vary from the dimensions that would be determined based upon the description of the "Unit" set forth in the Declaration of Condominium (which generally includes only the interior airspace between the unfinished interior surfaces of the walls bounding the unit). All sketches, renderings, graphic materials, plans, specifications, terms, conditions, and statements contained in this brochure are proposed and conceptual only and do not necessarily reflect the final plans and specifications for the development. Further, developer reserves the right to modify, revise, or withdraw any or all of sale in its sole discretion and without prior notice.

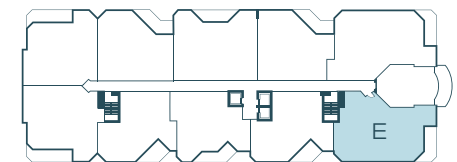


INTRACOASTAL

UNIT E

3	BEDROOMS	3.5	BATHROOMS
INTERIOR		2,421 SF	225 M
TERRACE		203 SF	19 M

TOTAL		2,624 SF	244 M

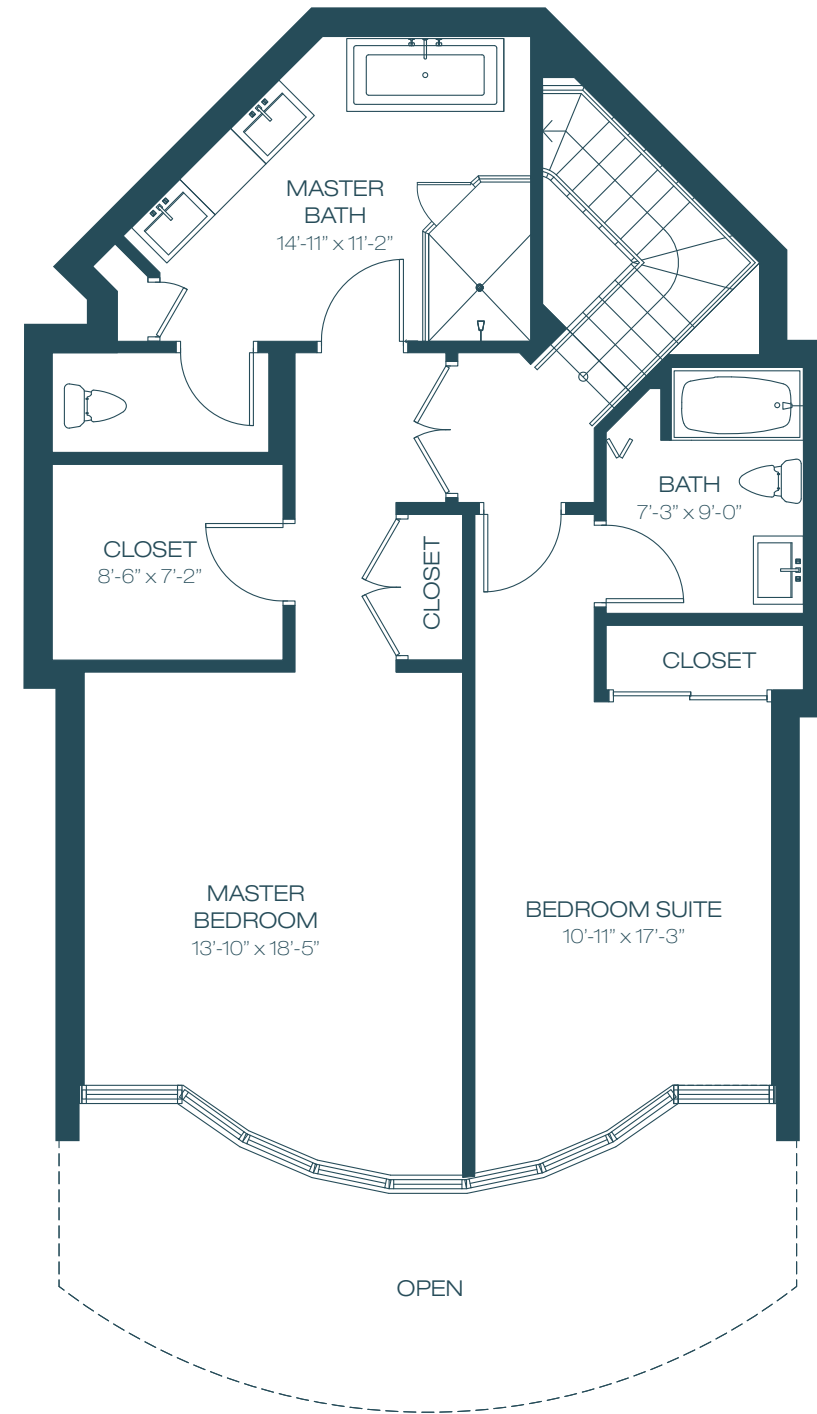


INTRACOASTAL

17201 BISCAYNE BOULEVARD, NORTH MIAMI BEACH, FL 33162

N
↑
KEY PLAN - UNIT LOCATION

All dimensions are approximate and all floor plans and development plans are subject to change. This floor plan represents the typical floor plan for the residence type indicated and is provided for informational purposes only. The actual floor plan of the residence may differ. All features listed for the residences are representative only, and the Developer reserves the right, without notice to or approval by the Buyer, to make changes or substitutions of equal or better quality for any features, materials and equipment. All dimensions are taken to the outside finished surface of the exterior walls, and to the centerline of interior demising walls, and vary from the dimensions that would be determined based upon the description of the "Unit" set forth in the Declaration of Condominium (which generally includes only the interior airspace between the unfinished interior surfaces of the walls bounding the unit). All sketches, renderings, graphic materials, plans, specifications, terms, conditions, and statements contained in this brochure are proposed and conceptual only and do not necessarily reflect the final plans and specifications for the development. Further, developer reserves the right to modify, revise, or withdraw any or all of sale in its sole discretion and without prior notice.

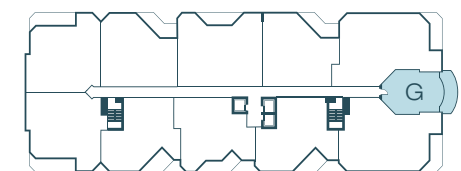


UNIT G

2	BEDROOMS	2.5	BATHROOMS
INTERIOR		2,080 SF	193 M
TERRACE		216 SF	20 M
TOTAL		2,296 SF	213 M

INTRACOASTAL

17201 BISCAYNE BOULEVARD, NORTH MIAMI BEACH, FL 33162



KEY PLAN - UNIT LOCATION

All dimensions are approximate and all floor plans and development plans are subject to change. This floor plan represents the typical floor plan for the residence type indicated and is provided for informational purposes only. The actual floor plan of the residence may differ. All features listed for the residences are representative only, and the Developer reserves the right, without notice to or approval by the Buyer, to make changes or substitutions of equal or better quality for any features, materials and equipment. All dimensions are taken to the outside finished surface of the exterior walls, and to the centerline of interior demising walls, and vary from the dimensions that would be determined based upon the description of the "Unit" set forth in the Declaration of Condominium (which generally includes only the interior airspace between the unfinished interior surfaces of the walls bounding the unit). All sketches, renderings, graphic materials, plans, specifications, terms, conditions, and statements contained in this brochure are proposed and conceptual only and do not necessarily reflect the final plans and specifications for the development. Further, developer reserves the right to modify, revise, or withdraw any or all of sale in its sole discretion and without prior notice.




MARINA PALMS

YACHT CLUB & RESIDENCES

M I A M I

17201 Biscayne Blvd, North Miami Beach, FL 33162

 ORAL REPRESENTATIONS CANNOT BE RELIED UPON AS CORRECTLY STATING REPRESENTATIONS OF THE DEVELOPER. FOR CORRECT REPRESENTATIONS, MAKE REFERENCE TO THE DOCUMENTS REQUIRED BY SECTION 718.503, FLORIDA STATUTES, TO BE FURNISHED BY THE DEVELOPER TO A BUYER OR LESSEE. OBTAIN THE PROPERTY REPORT REQUIRED BY FEDERAL LAW AND READ IT BEFORE SIGNING ANYTHING. NO FEDERAL AGENCY HAS JUDGED THE MERITS OR VALUE, IF ANY, OF THIS PROPERTY. We are pledged to the letter and spirit of U.S. policy for the achievement of equal housing throughout the Nation. We encourage and support an affirmative advertising and marketing program in which there are no barriers to obtaining housing because of race, color, sex, religion, handicap, familial status or national origin. This brochure does not constitute an offer to sell or a solicitation of an offer to buy a unit in the condominium. No solicitation, offer or sale of a unit in the condominium will be made in any jurisdiction in which such activity would be unlawful prior to any required registration therein.