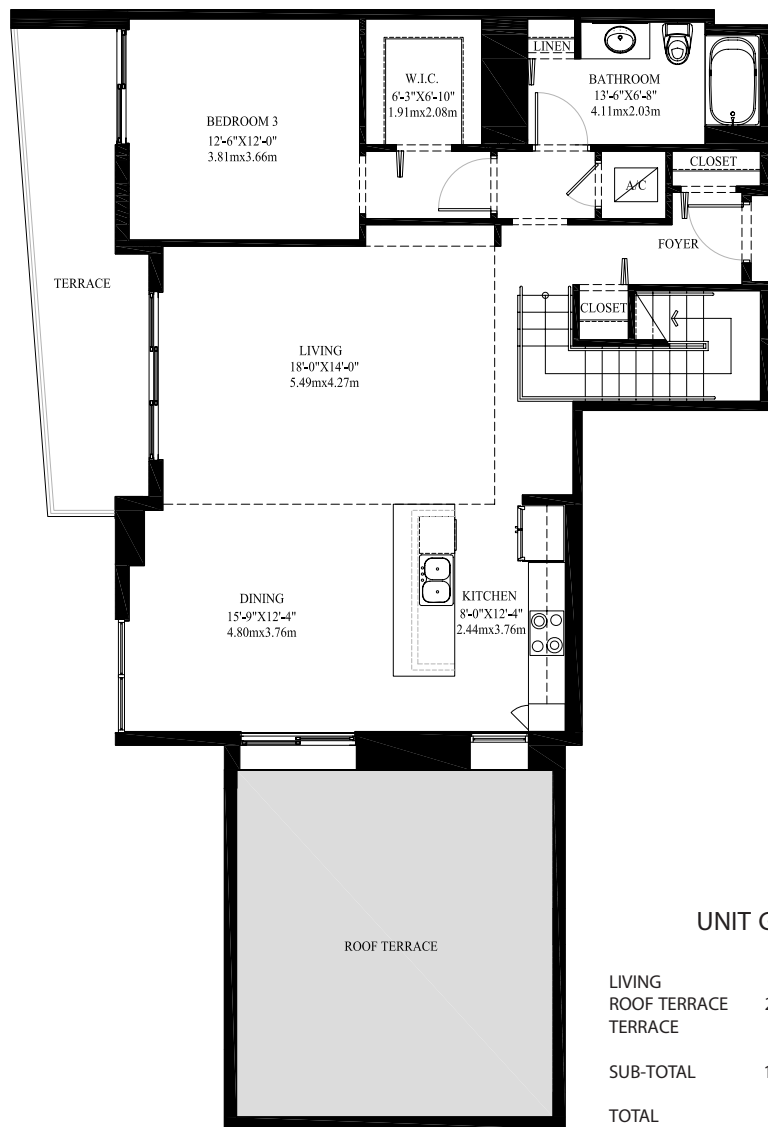
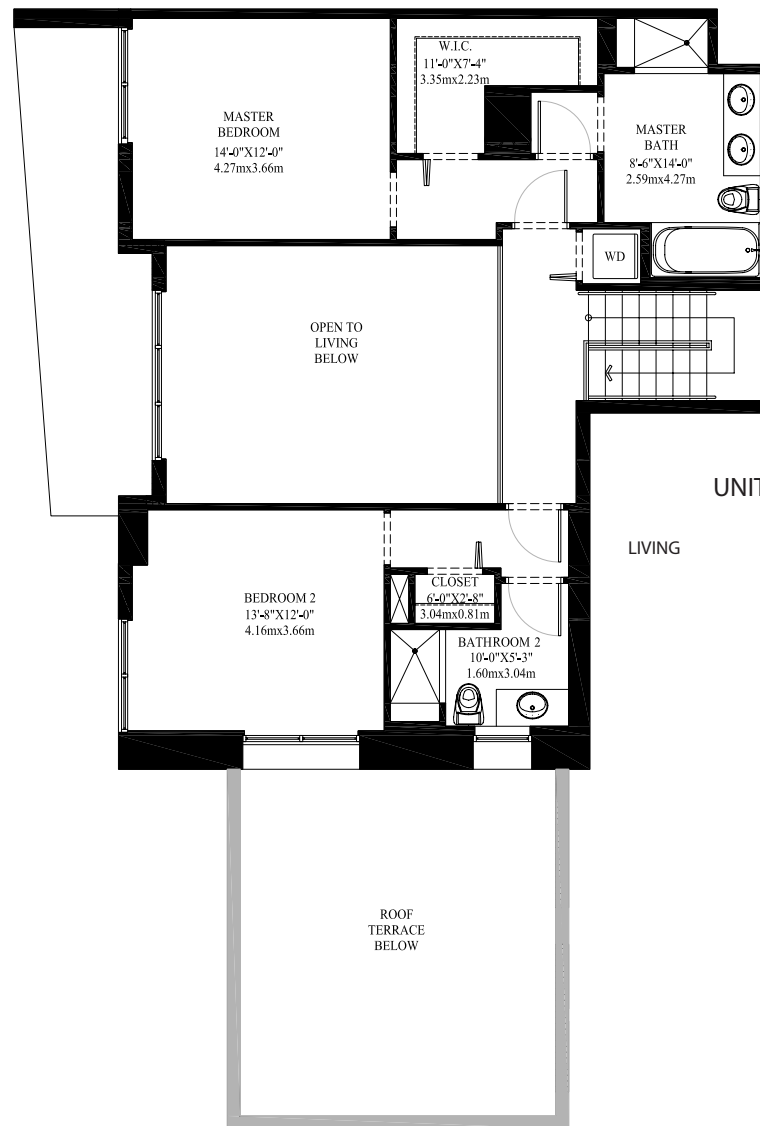


The Plaza



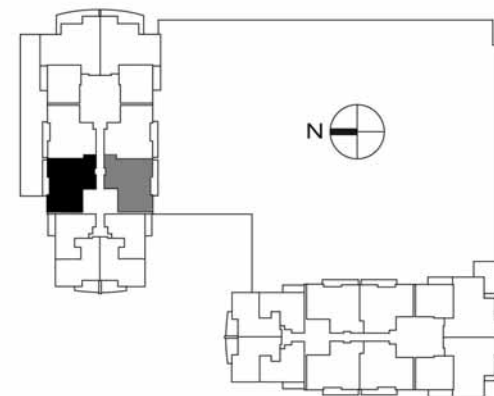
UNIT G (lower floor)

LIVING	1216 S.F.	(112.97 S.M.)
ROOF TERRACE	243 S.F.	(22.58 S.M.)
TERRACE	148 S.F.	(13.75 S.M.)
SUB-TOTAL	1607 S.F.	(149.30 S.M.)
TOTAL	2561 S.F.	(237.93 S.M.)



UNIT G (upper floor)

LIVING 954 S.F. (88.63 S.M.)



Stated dimensions are measured to the exterior boundaries of the exterior walls and the centerlines of interior demising walls. These dimensions in fact vary from those that would be determined by using the description and definition of the "Unit" set forth in the Declaration (which generally includes the airspace between the unfurnished interior perimeter walls and excludes interior structural components). All dimensions are approximate, and all floorplans and development plans are subject to change. At closing, the unit conveyed will be based upon the dimension combined in the Declaration. All sketches, renderings, graphic materials, plans, specifications, terms, conditions and statements contained in this brochure are proposed and conceptual only and do not and will not necessarily reflect the final plans and specifications for the development. Further, Developer reserves the right to modify, revise or withdraw any or all of same in its sole discretion and without prior notice.